

“Seizing Opportunity and Creating Value”



EXPLORING in CANADA and MEXICO - Corporate Presentation

TSX Venture: SSE

US OTC: SSEBF

Frankfurt: S6Q

www.silverspruceresources.com

October 2025

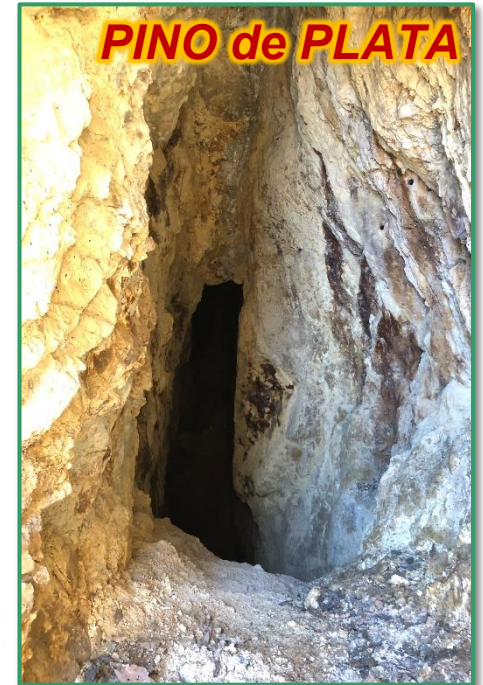
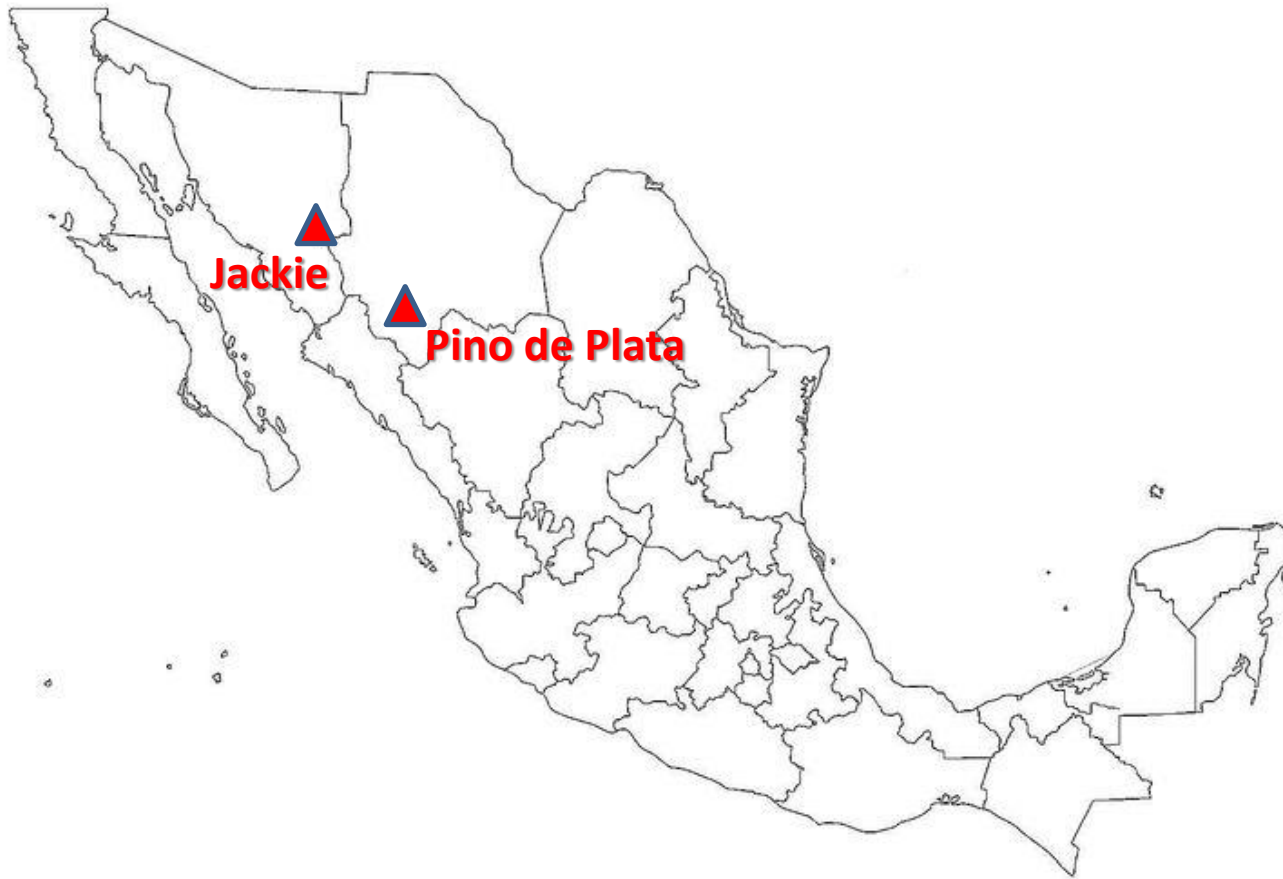


Cautionary Statement

Investors are cautioned that, except for statements of historical fact, certain information contained in this document includes "forward-looking information" with respect to a performance expectation for SSE. Such forward-looking statements are based on current expectations, estimates and projections formulated using assumptions believed to be reasonable and involving a number of risks and uncertainties which could cause actual results to differ materially from those anticipated. Such factors include, without limitation, fluctuations in foreign exchange markets, the price of commodities in both the cash market and futures market, changes in legislation, taxation, controls and regulations of national and local governments and political and economic developments in Canada and other countries where SSE carries-out or may carry-out business in the future, the availability of future business opportunities and the ability to successfully integrate acquisitions or operational difficulties related to technical activities of mining and reclamation, the speculative nature of exploration and development of mineral deposits located, including risks in obtaining necessary licences and permits, reducing the quantity or grade of reserves, adverse changes in credit ratings, and the challenge of title. The Company does not undertake an obligation to update publicly or revise any forward-looking statements or information, whether as a result of new information, future events or otherwise, unless so required by applicable securities laws.



Project Locations - Mexico



Mexico - The Potential

- ✓ Located within northwest-trending “Sonora Gold Belt” in Sierra Madre and parallel to Au-Ag-rich Mojave-Sonora Megashear
- ✓ Properties well located near Coeur’s Palmarejo Au-Ag Mine, Minera Alamos’ Santana/Nicho Au Mine and others
- ✓ **Jackie - Greenfields Au-Ag** discovery over 200m x 400m target in 2021; low to high grade opportunity
- ✓ There is **no prior exploration** reported on the Jackie Property with high Au-Ag assays to **9.65 g/t Au and 515 g/t Ag** in new discovery
- ✓ **Pino de Plata - Twelve Ag-Pb-Zn targets**; located in western Chihuahua, disseminated epithermal, replacement and skarn carbonate, and veins
- ✓ Low to high grade precious metals and base metals provide discrete opportunities for in-house or partnered development



“Seizing Opportunity and Creating Value”



EXPLORING in MEXICO *JACKIE*** Au-Ag Project**

TSX Venture: SSE

US OTC: SSEBF

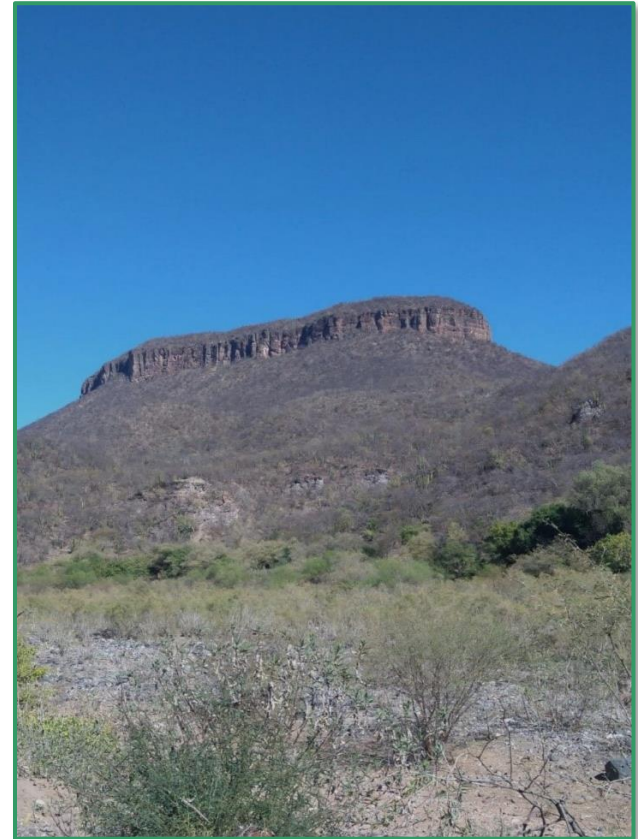
Frankfurt: S6Q

www.silverspruceresources.com

October 2025

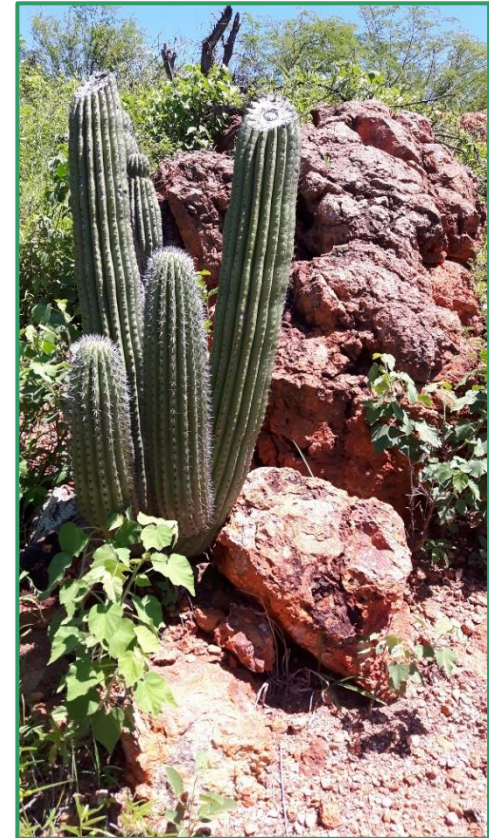


Jackie Au-Ag Project, Sonora, Mexico



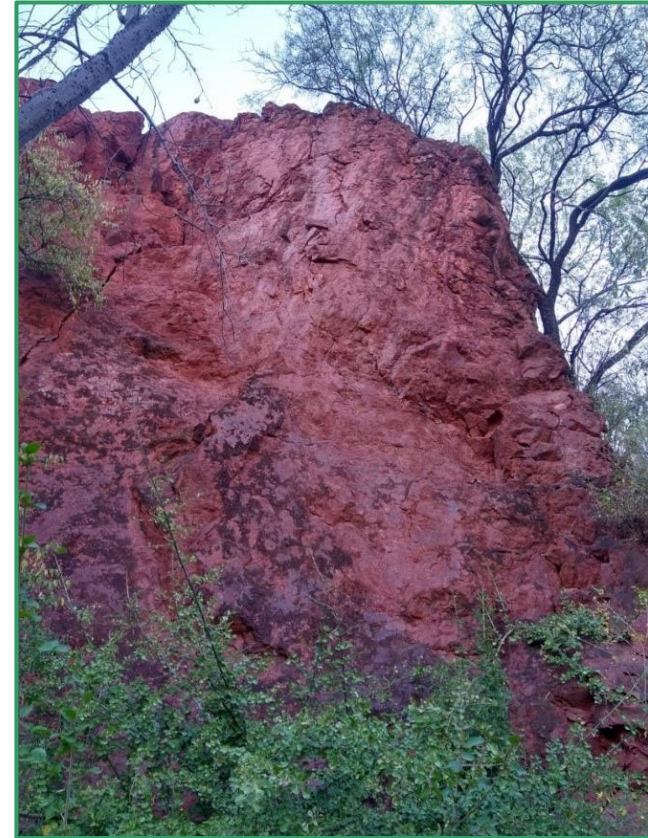
Project Location

Sierra Madre Occidental - Sonora



Jackie - The Property

- ✓ Located 52km SW of Mulatos and 60km SW of La India Mines in very productive region of the Sierra Madre Occidental gold-silver belt
- ✓ Road and trail-accessible concessions comprising 1,130 hectares located 170km SE of Hermosillo
- ✓ **Exploration Target is low grade, large tonnage, heap leachable deposit**
- ✓ **No record of historical exploration**
- ✓ West and adjacent to Minera Alamos' Santana/Nicho mine
- ✓ Option Agreement completed to earn 50% interest; joint venture documents signed in 2022
- ✓ Hold 100% interest, recently acquired additional 50% interest from JV partner
- ✓ **Phase 1 and 2 expenditures completed**
- ✓ **Final cash and share payment completed Nov 21**
- ✓ **Phase 1 trenching planned prior to drilling**
- ✓ **Updated SEMARNAT report and permit required**



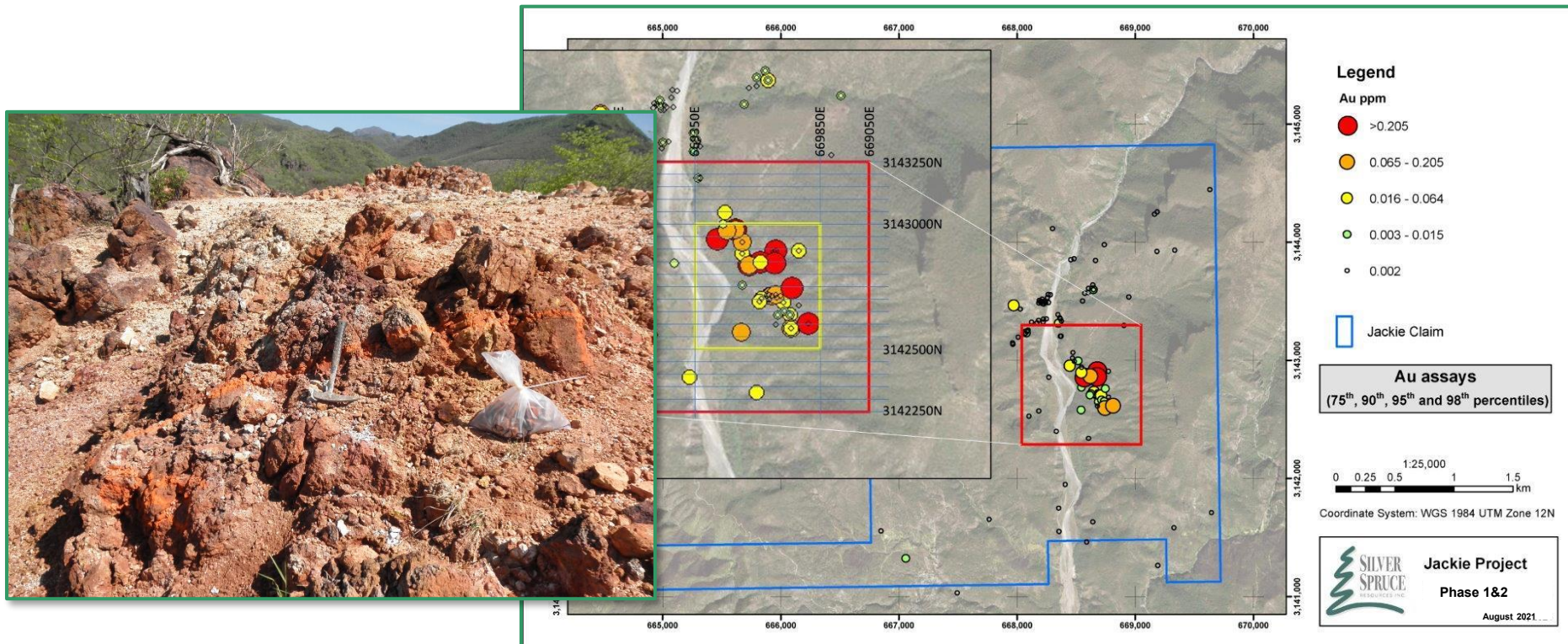
Jackie - Exploration and Plans

- ✓ Recent Au, multi-element and hyperspectral analysis of 310 rock samples in Phase 1 and 2 programs
- ✓ Phase 1 prospecting identifies new Au-Ag target **up to 9.56 g/t Au and 515 g/t Ag**
- ✓ Phase 2 mapping extends mineralization to 200m x 400m area with open NW trend, samples to **4.15 g/t Au and 100 g/t Ag**
- ✓ Regional hyperspectral ASTER and Landsat 8 OLI interpretation
- ✓ LiDAR survey completed to provide high resolution topography and imagery
- ✓ **Environmental (SEMARNAT) report submittal required for trench and drill permits**
- ✓ **Trenching planned to provide vectors for drilling over and adjacent to surface alteration and elevated precious metal data**



Phase 1 sample pit 9.56 g/t Au, 515 g/t Ag
Intense zeolite, clay, jarosite 'argillic' alteration

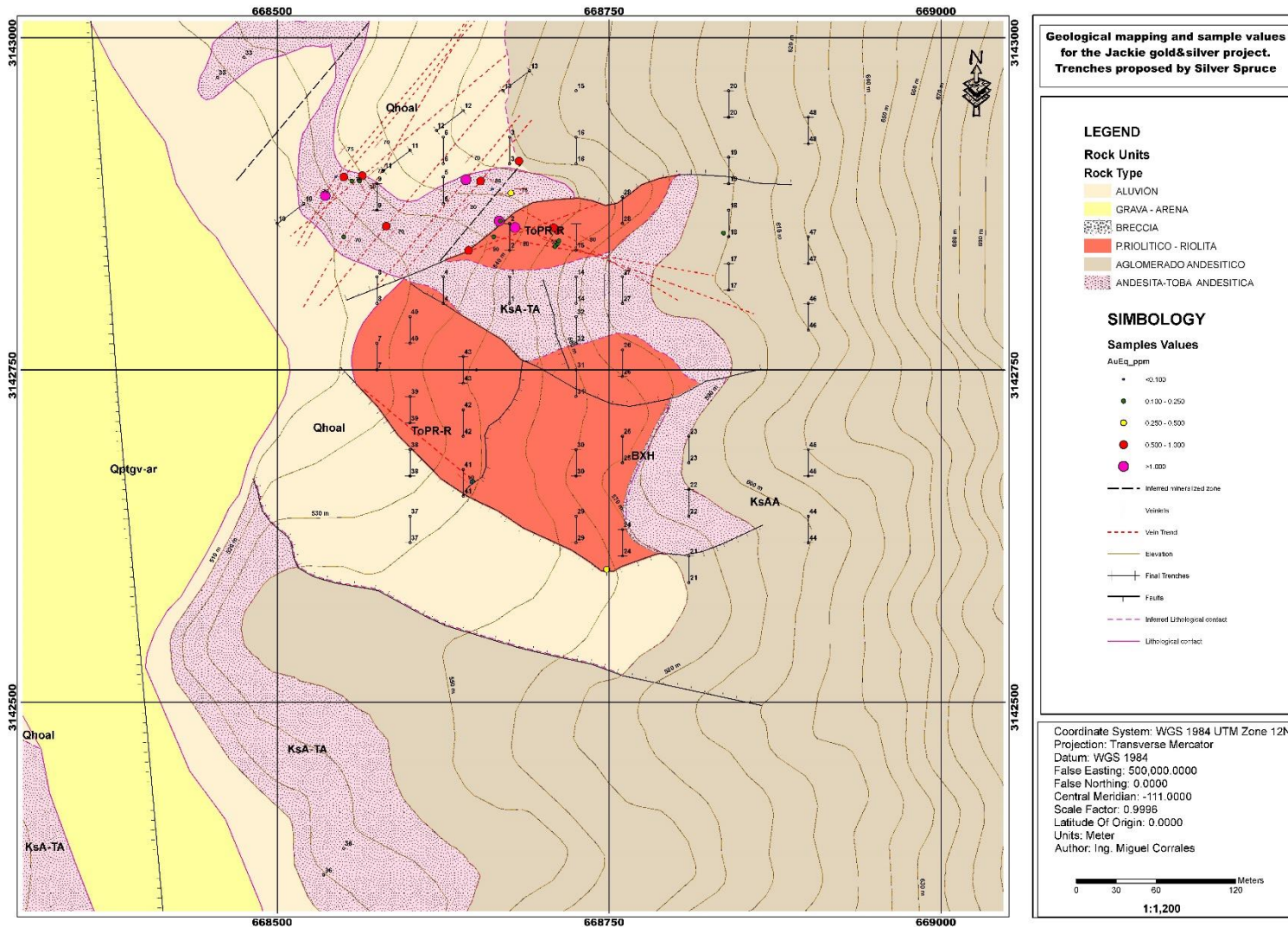
Jackie - Exploration Quote



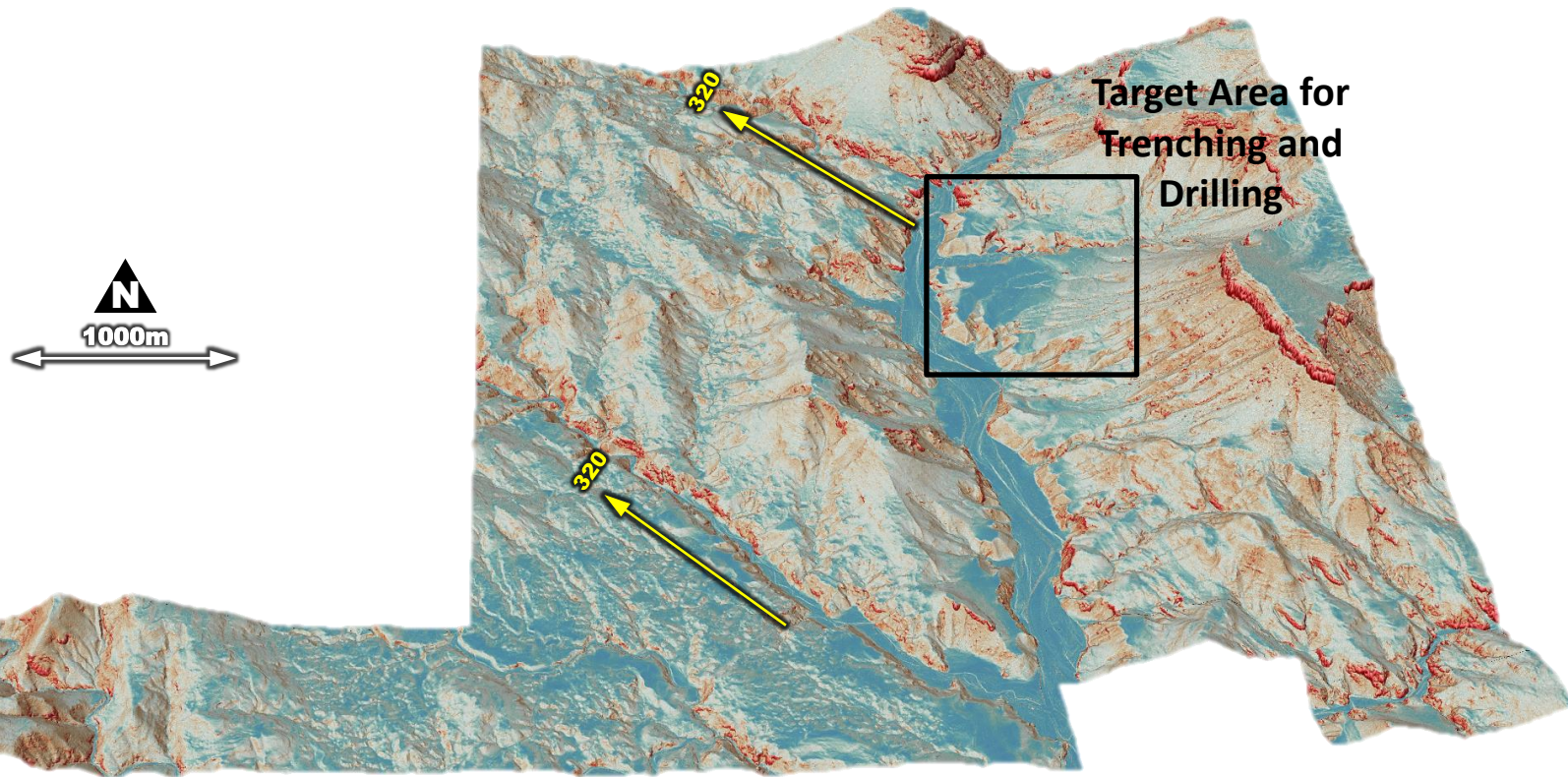
“We are excited about the potential for Jackie given the positive results and an original discovery with our early exploration campaigns. The intense silicate and oxide alteration with high-grade precious metal values ranging up to 9.65 g/t Au and 515 g/t Ag in Phase 1, and up to 4.15 g/t Au and 100 g/t Ag in separate Phase 2 samples, verified and extended the target area anomaly. A northwesterly trend running parallel to structural lineaments provides new untested targets for follow-up sampling, trenching and drilling.”



Jackie - Geological Mapping

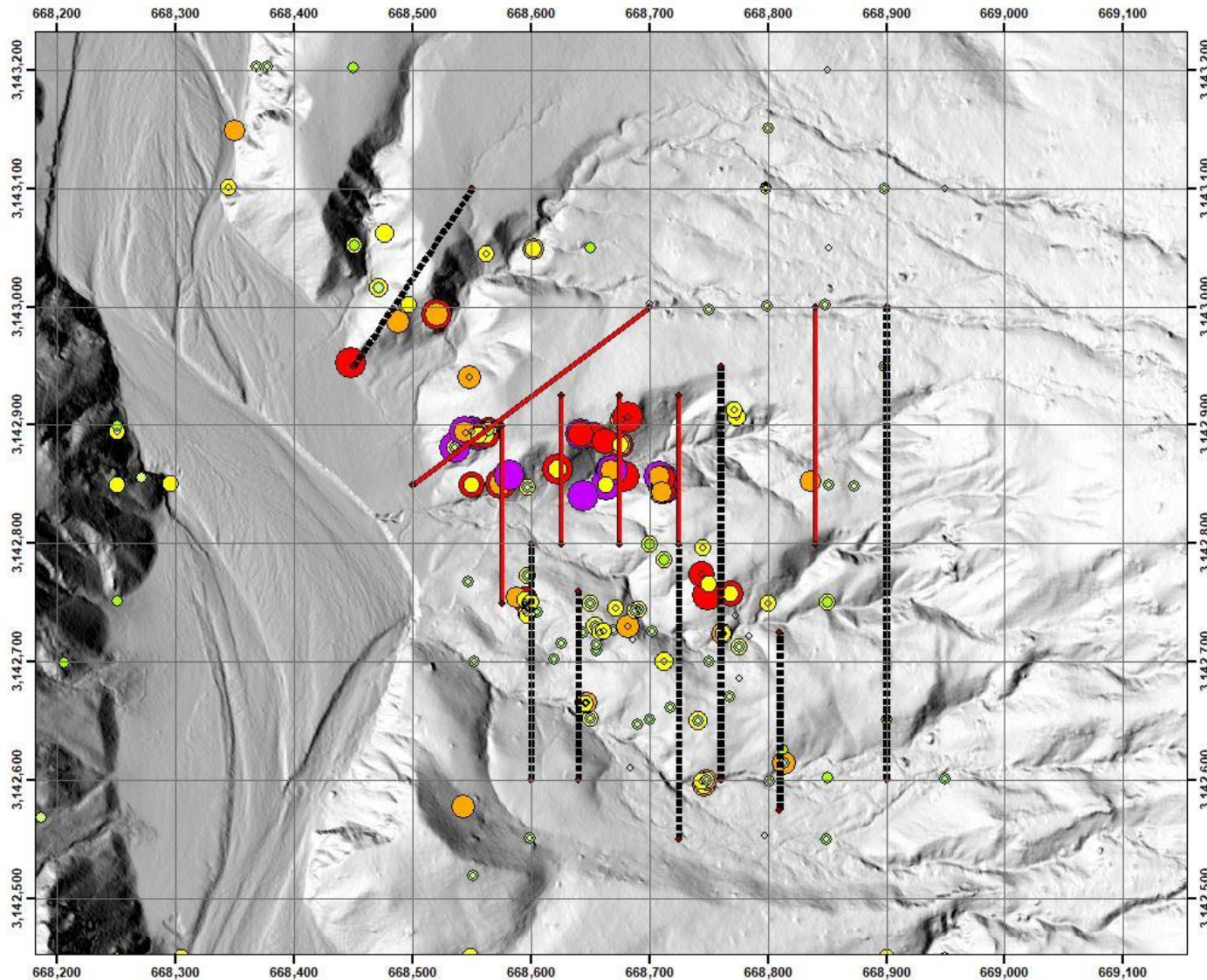


Jackie - Exploration and Plans

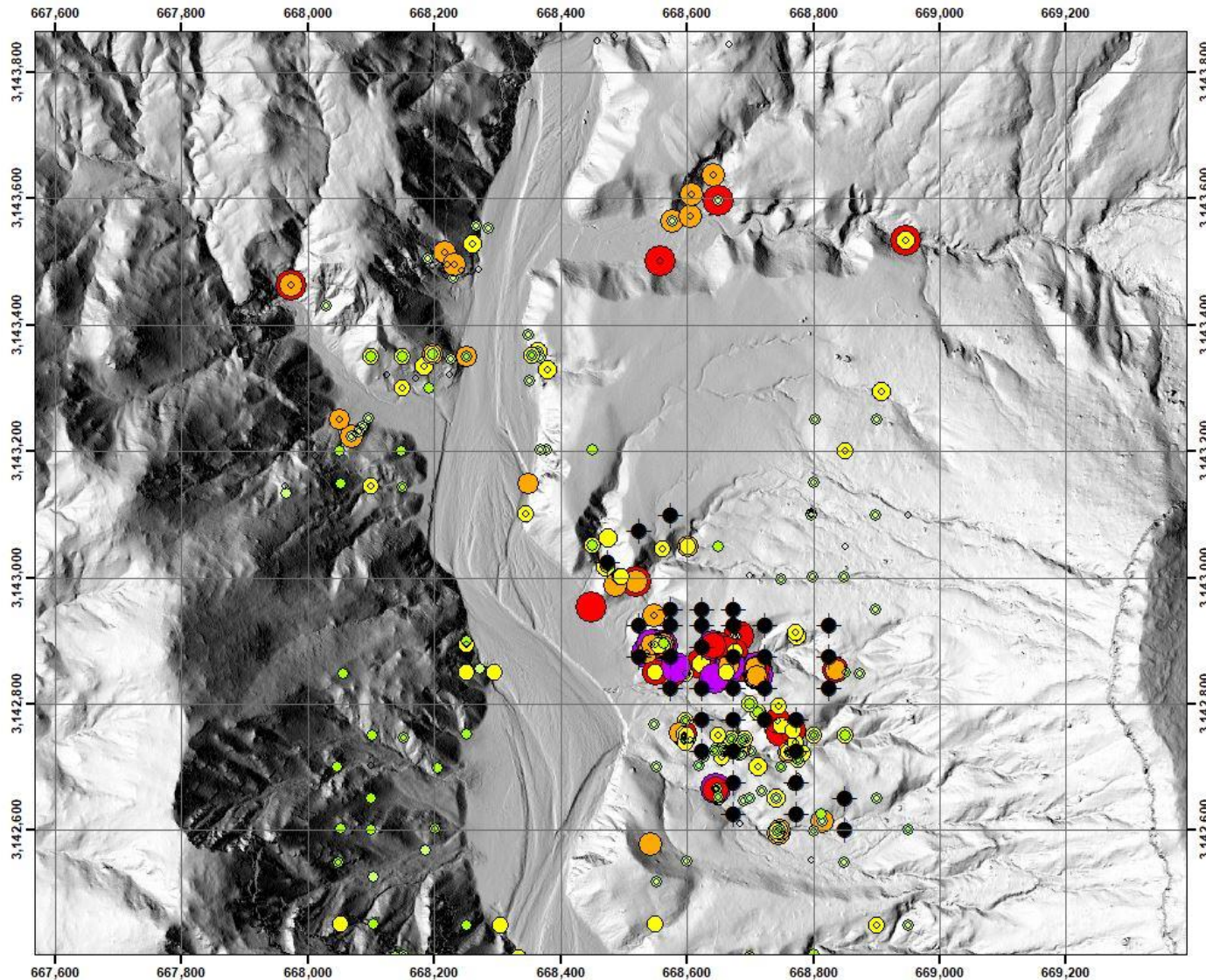


LiDAR enhanced digital elevation map with drill targets looking south across Jackie property

Jackie - Sampling, Proposed Phase 1, 2 Trenching



Jackie - Sampling, Proposed Drilling for Permit



Silver Spruce Resources Inc.

TSX Venture: SSE, USA OTC: SSEBF, Frankfurt: S6Q



Suite 802, Sun Tower, 1550 Bedford Highway,
Bedford, Nova Scotia, B4A 1E6 Canada

Greg Davison, PGeo, VP Exploration & Director 250-521-0444

greg@silverspruceresources.com

www.silverspruceresources.com

