

“Seizing Opportunity and Creating Value”



EXPLORING in CANADA and MEXICO - Corporate Presentation

TSX Venture: SSE
US OTCQB: SSEBF
Frankfurt: S6Q

www.silverspruceresources.com

October 2024



Cautionary Statement

Investors are cautioned that, except for statements of historical fact, certain information contained in this document includes "forward-looking information" with respect to a performance expectation for SSE. Such forward-looking statements are based on current expectations, estimates and projections formulated using assumptions believed to be reasonable and involving a number of risks and uncertainties which could cause actual results to differ materially from those anticipated. Such factors include, without limitation, fluctuations in foreign exchange markets, the price of commodities in both the cash market and futures market, changes in legislation, taxation, controls and regulations of national and local governments and political and economic developments in Canada and other countries where SSE carries-out or may carry-out business in the future, the availability of future business opportunities and the ability to successfully integrate acquisitions or operational difficulties related to technical activities of mining and reclamation, the speculative nature of exploration and development of mineral deposits located, including risks in obtaining necessary licences and permits, reducing the quantity or grade of reserves, adverse changes in credit ratings, and the challenge of title. The Company does not undertake an obligation to update publicly or revise any forward-looking statements or information, whether as a result of new information, future events or otherwise, unless so required by applicable securities laws.



Project Locations - Canada



Project Overview - Canada

- ✓ Silver Spruce recently signed an agreement to acquire 100% of the 8,750-hectare **Mystery, Till and Marilyn** properties in the Exploits Subzone Gold Belt in central Newfoundland near Sokoman Minerals and New Found Gold discoveries. Grassroots stage property.
- ✓ Vendor samples mainly 1-2 g/t Au, up to 12.5 g/t Au, with strong As and Sb association in laminated to brecciated quartz-carbonate veins typical to local and international analogues of epithermal to mesothermal deposits.
- ✓ Silver Spruce signed an agreement to acquire 100% of the 2,124-hectare **Melchett Lake** project located within an historically active region including Copper Lake's Marshall Lake VMS project.
- ✓ Map staking has increased the Property to 4,716 hectares to complete coverage of the known mineralization reported over 22 km strike length.
- ✓ High grade surface samples have yielded up to 28.8 g/t Gold and 19% Zinc.



“Seizing Opportunity and Creating Value”



EXPLORING in CANADA **MELCHETT LAKE** Zn-Ag-Au-Cu VMS Project

TSX Venture: SSE
US OTCQB: SSEBF
Frankfurt: S6Q

www.silverspruceresources.com

October 2024



***Melchett Lake
Zn-Ag-Au-Cu
VMS Project,
Ontario, Canada***



Melchett Lake - Project Overview

- ✓ Silver Spruce signed an agreement to acquire 100% of the 2,124-hectare **Melchett Lake** project located within an historically active region including Copper Lake's Marshall Lake VMS project
- ✓ Map staking increased the Property to 5,022 hectares to complete coverage of the known mineralization reported over 22 km strike length
- ✓ Additional staking to the east and west proposed to cover more gold, silver and base metal targets
- ✓ High grade surface samples have yielded up to 28.8 g/t Gold, >500 g/t Ag and 19% Zinc
- ✓ Geochemistry highly favorable for VMS footwall alteration and proximal mineralization
- ✓ Drilling and borehole geophysics identified increasing copper and conductive targets at depth
- ✓ Numerous drill targets in peripheral oxide and sulphide facies exhalite and iron formation



Melchett Lake - The Potential

- ✓ The Property lies 110 km north of Geraldton, Ontario and 60 km north of Nakina at 50°45' north latitude and 86°59' west longitude.
- ✓ The Ontario Geological Survey Exploration Highlights in 2016-2017 reported “The potential of discovery of economic zinc-lead-silver-gold-bearing VMS deposits in the Melchett Lake greenstone belt is high.”
- ✓ The multi-kilometre strike length of the known areas of mineralization from surface to >500 metres depth, depth potential indicated by the downhole Maxwell modelling, broad and highly favorable alteration type and intensity, and mineralization, increasing Cu to Zn with depth, intense alteration profile similar to well-known polymetallic deposits, and presence of high-grade values of both precious metals and base metals provide Silver Spruce Resources Inc. with an opportunity to grow with the strong gold, silver and zinc markets.
- ✓ Quantec Spartan MT Survey will focus on high priority deep Relf targets
- ✓ Compilation of our ArcGIS database will extend through several historical Au-Ag-Cu-Zn showings and geochemical anomalies identified on the eastern and western claims.”



Melchett Lake - The Property Geology

Style, Grade, Size, Structure and Location with Potential

- ✓ Polymetallic Zn-Pb-Cu-Ag-Au VMS style mineralization
- ✓ Similar in character to ore deposits at Geco, Mattabi, Winston Lake, Brunswick, Rouyn-Noranda, Lyon Lake, Murchison, Snow Lake
- ✓ Road, fixed wing floatplane, helicopter and boat access to property
- ✓ **22 km strike length** of the known areas of mineralization, more depth potential indicated by Maxwell modelling, airborne and downhole EM anomalies
- ✓ **Broad core intervals (>200 m) and depths (surface to >500m)**, increasing Cu/Zn in intense alteration profile, multi-element depletion and enrichment zones
- ✓ High grade lenses of Zn & Ag, variable Cu, Au, & Pb
- ✓ **Zn to 19.1%, Ag to 560 g/t, Au to 28.8 g/t, Cu to 1.65%, Pb to 1.2%**



Melchett Lake - Mineral Occurrences

Mineral Occurrence Highlights - Ontario Geological Survey

| Occurrence/Prospect and Location | Mineral Deposit Inventory (MDI) Number | Assay Highlights | Description of Occurrence |
|--|--|--|--|
| Nakina Mines Prospect (Nakina 1 Zone) (499534E, 5622152N) | MDI42L14SE00005 | 14.85% Zn, 0.13% Cu, 0.92 oz/ton Ag and 0.30 oz/ton Au (assay from trench; Nakina Mines Ltd., 1988) 8.25% Zn, 1.08% Pb, 0.76 oz/ton Ag and 0.20 oz/ton Au (Hole N-4, Nakina Mines Ltd., 1988) | Polymetallic pyrite-sphalerite-chalcopyrite-galena mineralization occurs within felsic to intermediate metavolcanic schists within abundant pyrite, sericite and chloritic alteration. |
| Lun-Kerr Occurrence (Relf Zone) (503908E, 5622130N) | MDI42L15SW00003 | 19.1% Zn, 0.40% Cu, 2.2% Pb and 16.4 oz/ton Ag (assay from trench, Shawmine Explorations Ltd., 1984) | Polymetallic pyrite-sphalerite-chalcopyrite-galena mineralization occurs within muscovite-sericite schists and quartzo-feldspathic mica schists |
| Aldor Exploration Gold Occurrence (512492E, 5618455N) | MDI42L10NW00007 | 0.52 oz/ton over 25 cm | Sample from quartz vein in a quartz gabbro dike (later interpreted to be a mafic metavolcanic unit) |
| Campbell Occurrence (506406E, 5618999N; location approximate) | n/a | 1.8% Zn, 1.0% Cu and 0.06 oz/ton Au (assay from grab sample) | Disseminated copper, zinc, gold mineralization from pyritic quartz-sericite schist (altered felsic pyroclastic rocks) |
| Molly Lake Occurrence (508192E, 5617632N; location approximate) | n/a | 1.5 % Zn and 0.17 oz/ton Au | Mineralization consists of massive pyrrhotite in a 3 m thick amphibolite schist layer |

Melchett Lake - Relf Zone

Leuenberger Air Turbo Otter – SSE director Davison at Cordingley Lake base



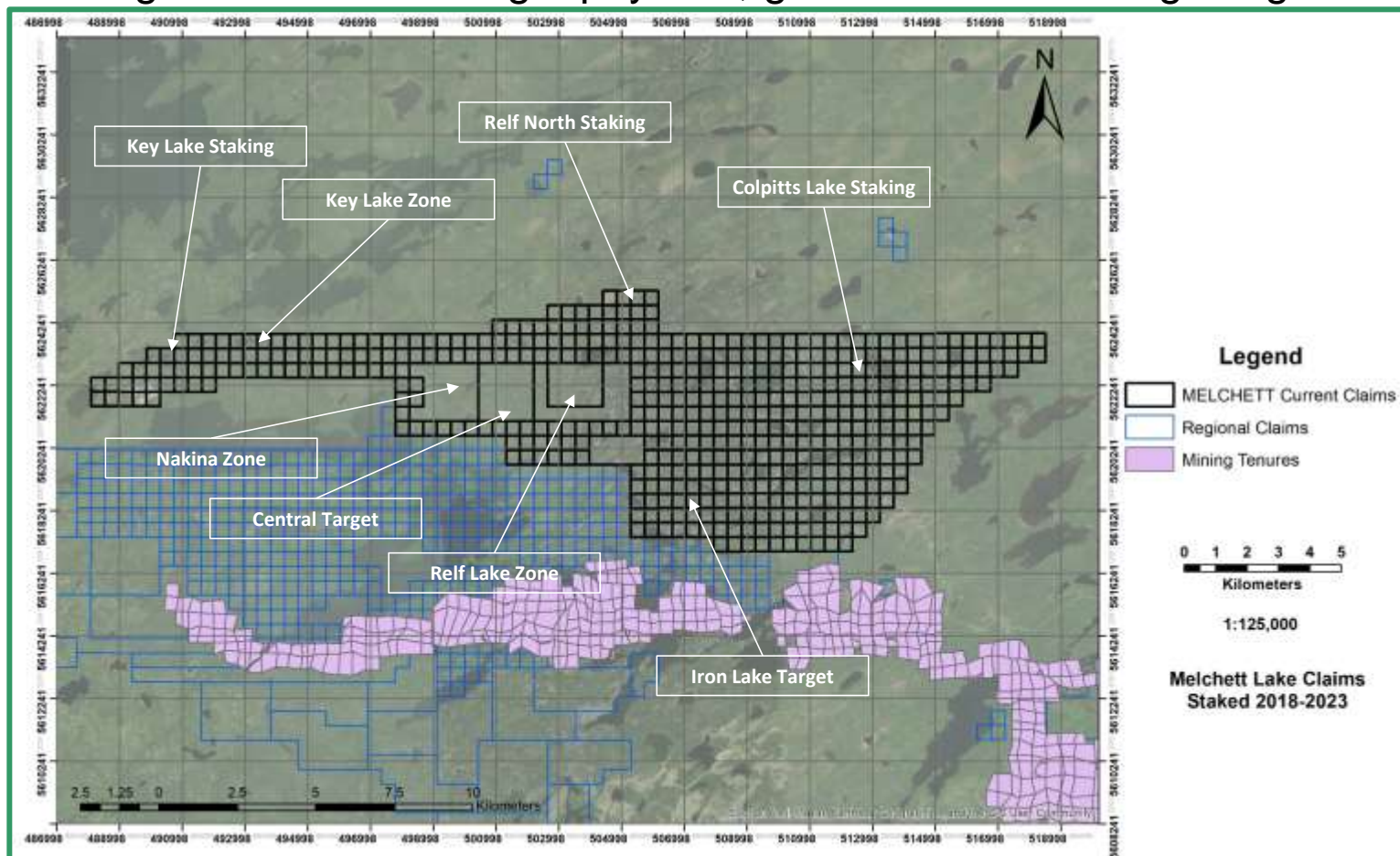
Melchett Lake - Property Access

Taken from helicopter over Relf Lake looking SW to Melchett Lake



Melchett Lake - Property Claims

Melchett Lake claims showing areas of recent staking by Company and Vendor (Key Lake, Relf North and Colpitts Lake), known zones of An-Ag-Cu-Au-Pb mineralization, and targets with indicated geophysical, geochemical and/or geological anomalies.



Melchett Lake - Exploration Documents

- ✓ **Signed Agreement with Aroland First Nation in Q2 2021**
- ✓ **Signed Agreement with Ginoogaming First Nation in Q3 2021**
- ✓ **Updated agreements with AFN and GFN Oct 24**
- ✓ **Permit for core claims with Ministry of Mines through 2024**
- ✓ **Permits for surrounding claims received Dec 23**



Melchett Lake - Exploration Completed

- ✓ Contracted Pleson Geoscience for camp construction and operations, ready for Q2 2023 re-start
- ✓ Contracted MPX Geophysics for Mag/VLF/Gamma Survey completed Q4 2021
- ✓ Contracted Western Heritage for Phase 1 Archeological Report, including a Traditional Land Use and Occupancy Study Q4 2021, report complete Q2 2023
- ✓ Contracted In3D Geoscience for geophysical interpretation and compilation, completed Phase 1 and 2
- ✓ Contracted Eagle Mapping for property-wide LiDAR survey, completed Q1 2023
- ✓ Contracted GeoCloud Analytics for LiDAR interpretation, completed draft Q2 2023



Melchett Lake - Exploration Plans

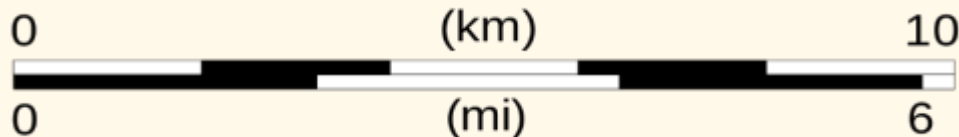
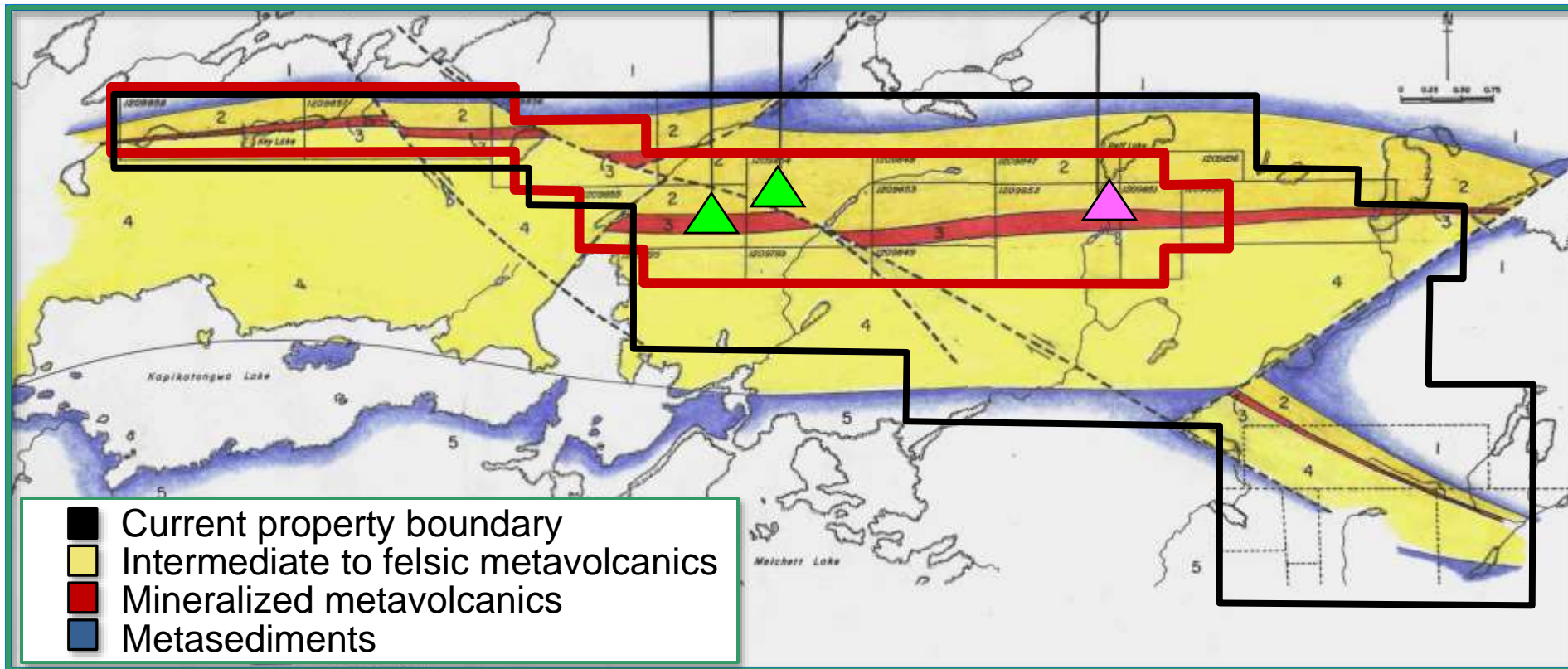
- ✓ Line-cutting for Spartan MT survey, Q4 2024
- ✓ Contracts Quantec Geoscience for Spartan survey, Q1/2 2025
- ✓ GIS Compilation, Re-Interpretation of BHP-EM, HeliTEM and Regional Magnetic Surveys 2024/2025 ongoing
- ✓ Structural and lineament mapping, Prospecting, Soil and Rock Geochemistry, Targeted geological mapping Q2/3 2025
- ✓ Drilling - Phase 1 Au and Ag-Zn, 2,500m, Phase 2 Au and Ag/Zn 5,000m 2025
- ✓ Phase 1 Budget \$600,000 to Q4 2024
- ✓ Phase 2 Budget \$900,000 incl. fall drilling to Q1/2 2025
- ✓ Phase 3 Budget \$1,500,000 incl. winter drilling to Q2/3 2025



Heavy gossan in sulphide zone,
dark ferroan sphalerite lens

Melchett Lake - Historical Geology Map

Melchett Lake historical claims (red), geology and mineral occurrences



Melchett Lake - Target Evaluation

- ✓ Geological Anomalies defined by intense alteration and local high grades of mineralization
- ✓ Magnetic anomalies define structural complexity and potential stacking of mineralization
- ✓ Resistivity anomalies due to footwall or hangingwall alteration of VMS deposits (chlorite, sericite, silica, etc.)
- ✓ Chargeability anomalies caused by disseminated sulphide mineralization typically in the order of 1-5%
- ✓ Conductivity anomalies resulting from lenticular massive to semi-massive sulphide bodies
- ✓ Zones of depletion typical of hydrothermal systems related to VMS deposits: Calcium, Strontium, Sodium
- ✓ Zones of enrichment typical of hydrothermal systems related to VMS deposits: Silver, Magnesium, Barium, Alteration Index #



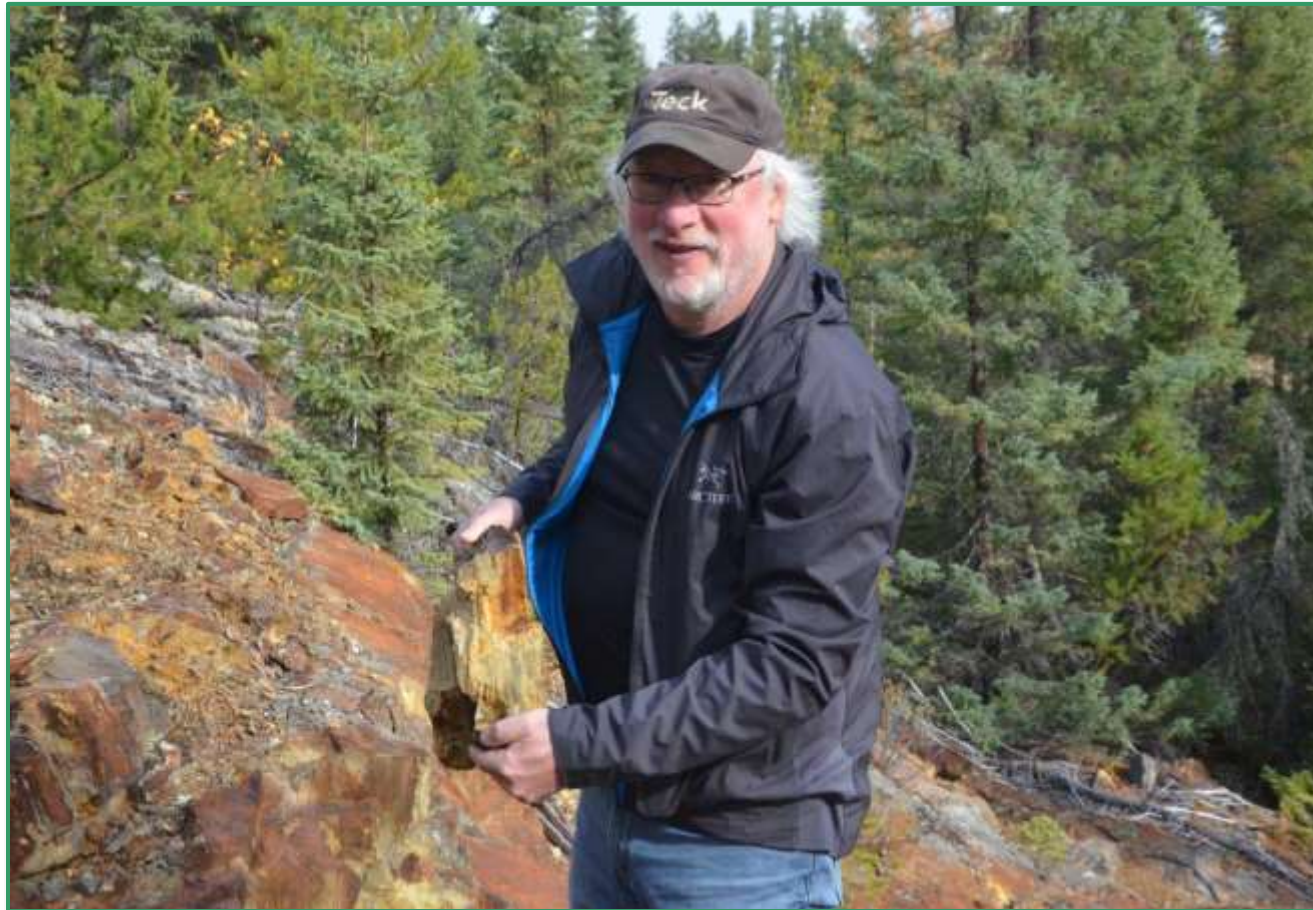
Melchett Lake - Relf Zone

2019 Relf Zone - main trench area looking NNE across structural fabric



Melchett Lake - Relf Zone

2019 Relf Zone - SSE director Davison with altered QSP-Sphalerite



Melchett Lake - Relf Zone

Relf Zone rock sampling from main trench area - Davison 1983, 1984

| Sample | Target | Zinc ppm | Lead ppm | Copper ppm | Silver ppm | Gold ppb | Zinc % | Silver g/t |
|--------|--------|----------|----------|------------|------------|-------------|-------------|--------------|
| A-244 | Relf | >10000 | 5400 | 1900 | >100 | 78 | 7.03 | 120.7 |
| A-245 | Relf | >10000 | 5600 | 3500 | >100 | 900 | 8.65 | 133.7 |
| A-246 | Relf | >10000 | >10000 | 2600 | >100 | 110 | 7.97 | 181 |
| A-247 | Relf | >10000 | 5500 | 7000 | >100 | 1700 | 6.19 | 160.2 |
| A-248 | Relf | >10000 | 3700 | 3200 | >100 | 250 | 8.65 | 133.7 |
| A-249 | Relf | >10000 | 1900 | 2100 | 64 | 97 | 10.3 | |
| A-250 | Relf | >10000 | 1500 | 620 | 11 | 34 | 4.23 | |
| A-253 | Relf | >10000 | 300 | 610 | 7 | 84 | 5.13 | |
| A-923 | Relf | >10000 | 2480 | 1420 | 62 | 70 | NR | |
| A-925 | Relf | >10000 | 645 | 2120 | 29 | 57 | NR | |
| A-926 | Relf | >10000 | 420 | 2500 | 23.2 | 15 | NR | |



Melchett Lake - Relf Zone

2019 - heavy gossan in sulphide zone, dark ferroan sphalerite lens



Melchett Lake – Example of Relf Zone Sampling

| Sample No. | Zinc % | Lead % | Copper % | Silver g/t | Gold g/t |
|------------|--------|--------|----------|------------|----------|
| 1061 | 12.90 | 1.920 | 0.288 | 552 | 0.020 |
| 1062 | 2.63 | 0.870 | 0.116 | 254 | 0.012 |
| 1063 | 2.77 | 0.356 | 0.164 | 157 | 0.037 |
| 1064 | 11.60 | 0.866 | 0.507 | 278 | 0.028 |
| 1065 | 16.80 | 2.400 | 0.075 | 655 | 0.018 |
| 1066 | 8.26 | 0.330 | 0.972 | 170 | 0.025 |
| 1067 | 11.10 | 1.300 | 0.142 | 394 | 0.022 |
| 1068 | 9.88 | 0.558 | 0.154 | 179 | 0.035 |

Relf Zone rock sampling from main trench area - 1997



Melchett Lake - Nakina Zone

SSE Director Greg Davison and Project Geologist Luc Lepage at Nakina Zone trenching areas



Melchett Lake - 2019 Rock Sampling

Nakina and Relf Zone rock sampling - Silver Spruce 2019

| Sample No. | Target | Zinc ppm | Lead ppm | Copper ppm | Silver ppm | Gold ppm | Zinc % | Silver g/t |
|------------|--------|------------------|-------------|-------------|----------------|--------------|-------------|------------|
| 108101 | Nakina | 20 | 10.6 | 16.5 | 1.1 | 0.031 | | |
| 108102 | Nakina | 2 | 0.4 | 0.7 | 0.02 | 0.002 | | |
| 108103 | Nakina | 3310 | 892 | 58.6 | 1.6 | 0.088 | | |
| 108104 | Nakina | >10000 | 6690 | 399 | 4.06 | 0.383 | 3.24 | |
| 108105 | Nakina | 108 | 63.8 | 11.8 | 0.31 | 0.022 | | |
| 108106 | Nakina | 230 | 22.5 | 52 | 1.04 | 0.012 | | |
| 108201 | Relf | 203 | 12.4 | 51.7 | 1.02 | 0.012 | | |
| 108204 | Relf | >10000 | 622 | 1465 | 27 | 0.053 | 3.98 | |
| 108205 | Relf | >10000 | 634 | 1470 | 27.5 | 0.03 | 1.08 | |
| 108207 | Relf | >10000 | 1185 | 2250 | 52.7 | 0.034 | 4.42 | |
| 108210 | Relf | >10000 | 2740 | 5180 | >100 | 0.737 | 9.12 | 131 |
| 108211 | Relf | >10000 | 863 | 2050 | 39.1 | 0.054 | 4.89 | |
| 108217 | Relf | >10000 | 9650 | 1600 | >100 | 0.119 | 14.7 | 301 |



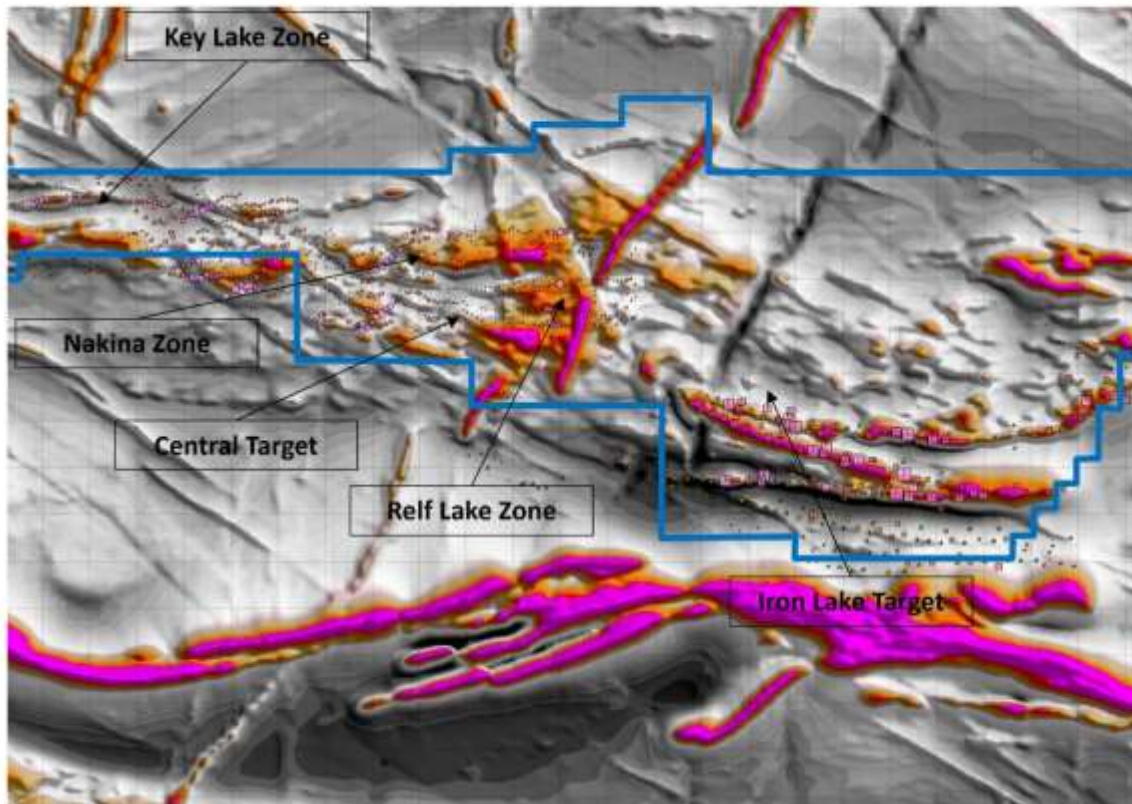
Melchett Lake – Example of Relf Zone Sampling



Historical unsampled drill core samples stacked from 2007-2008 drilling at Relf Lake Zone showing unweathered brown ferroan sphalerite, pyrite, chalcopyrite lenses hosted by a quartz-feldspar-biotite±garnet schist 'matrix' with banded 'volcanoclastic' texture.

Melchett Lake - Geophysical Targeting

Claims (outlined in blue) showing magnetic gradient data and EM anomalies (pink squares with proportional size to strength), NE and NW diabase linears and tightly folded iron formation with high magnetic intensity (bright pink). Known zones of An-Ag-Cu-Au-Pb mineralization and target areas focused along coincident MAG/EM and structural loci.



0 1 2 3 4 5
Kilometers

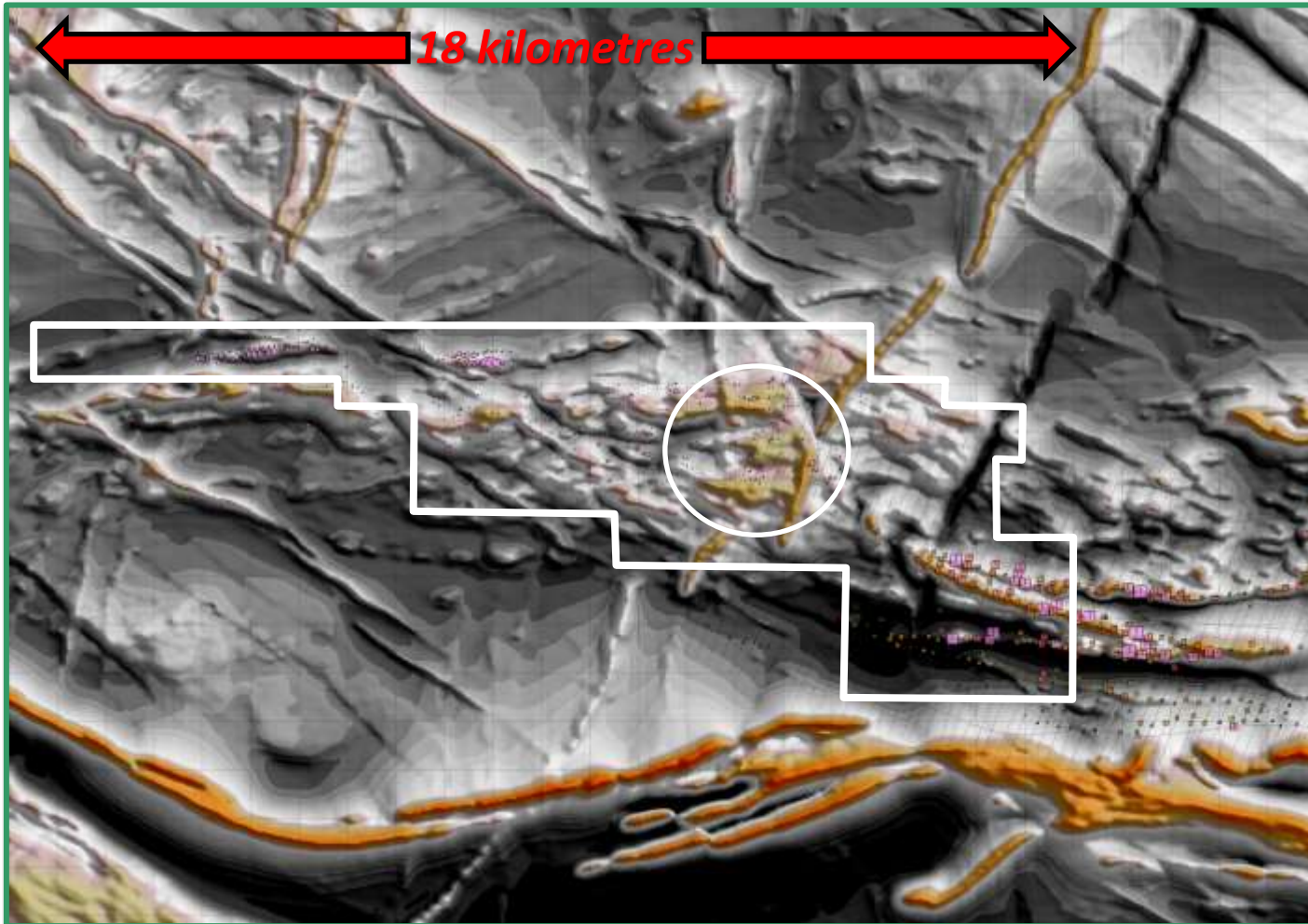
1:125,000

Melchett Lake Claims

2010 OGS MAG Gradient data
MAG RTPge (gradient enhanced),
CET dynamic range compression (DRC).

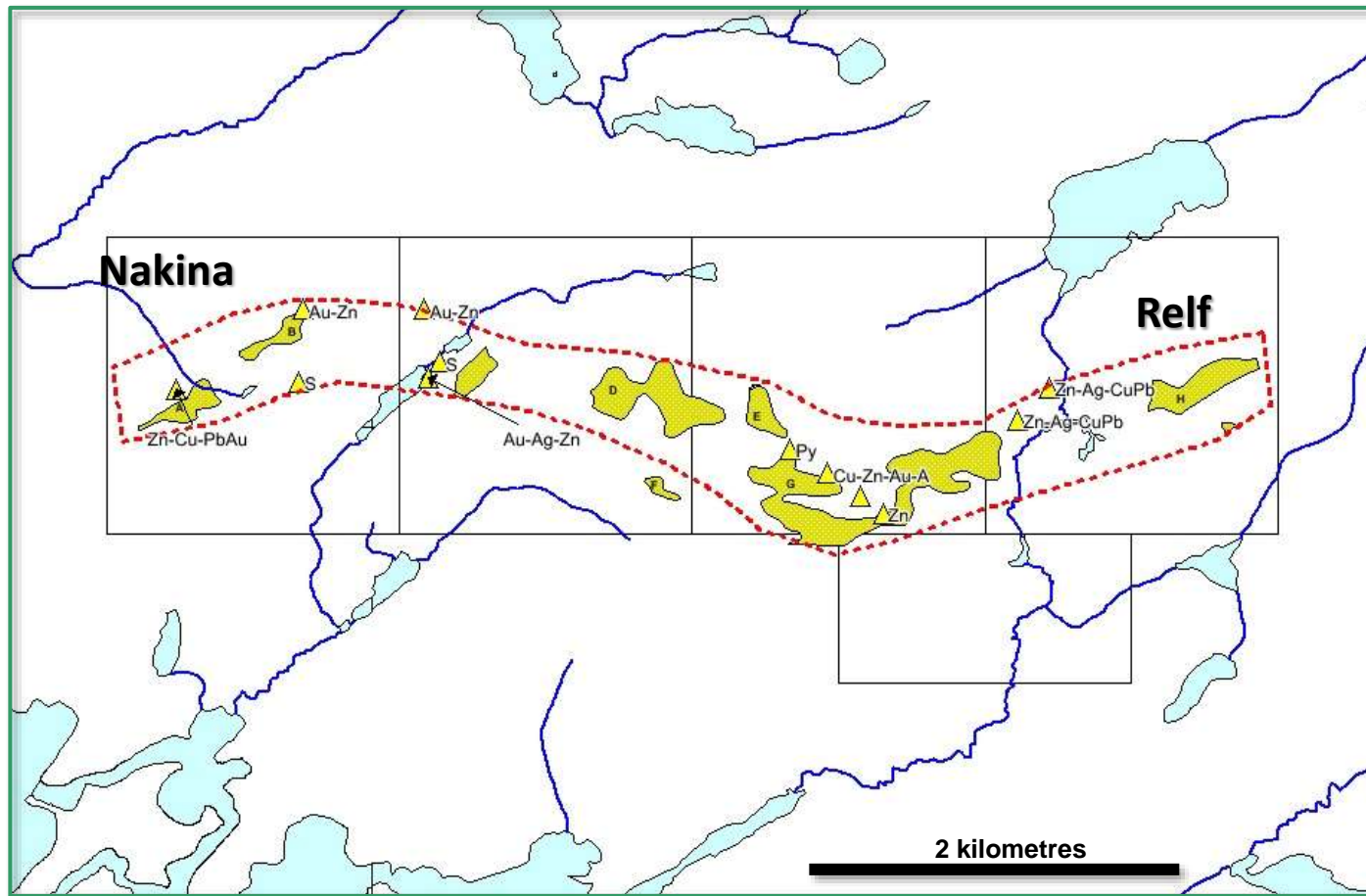


Melchett Lake - Geophysical Targeting



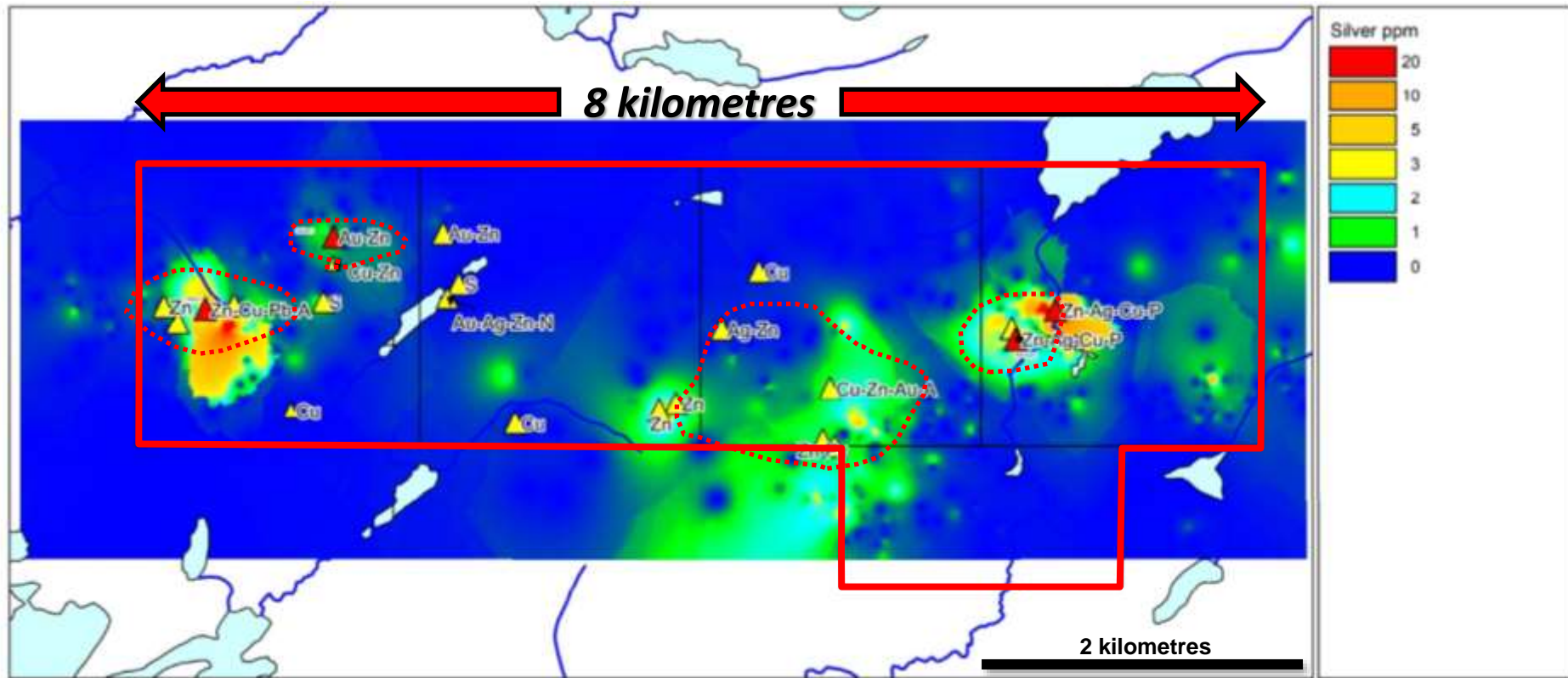
Geophysical target highlighted at Relf Zone with conductors and magnetic fabric shown in pink maintain strength to >500m depth.

Melchett Lake - Geophysical Targeting



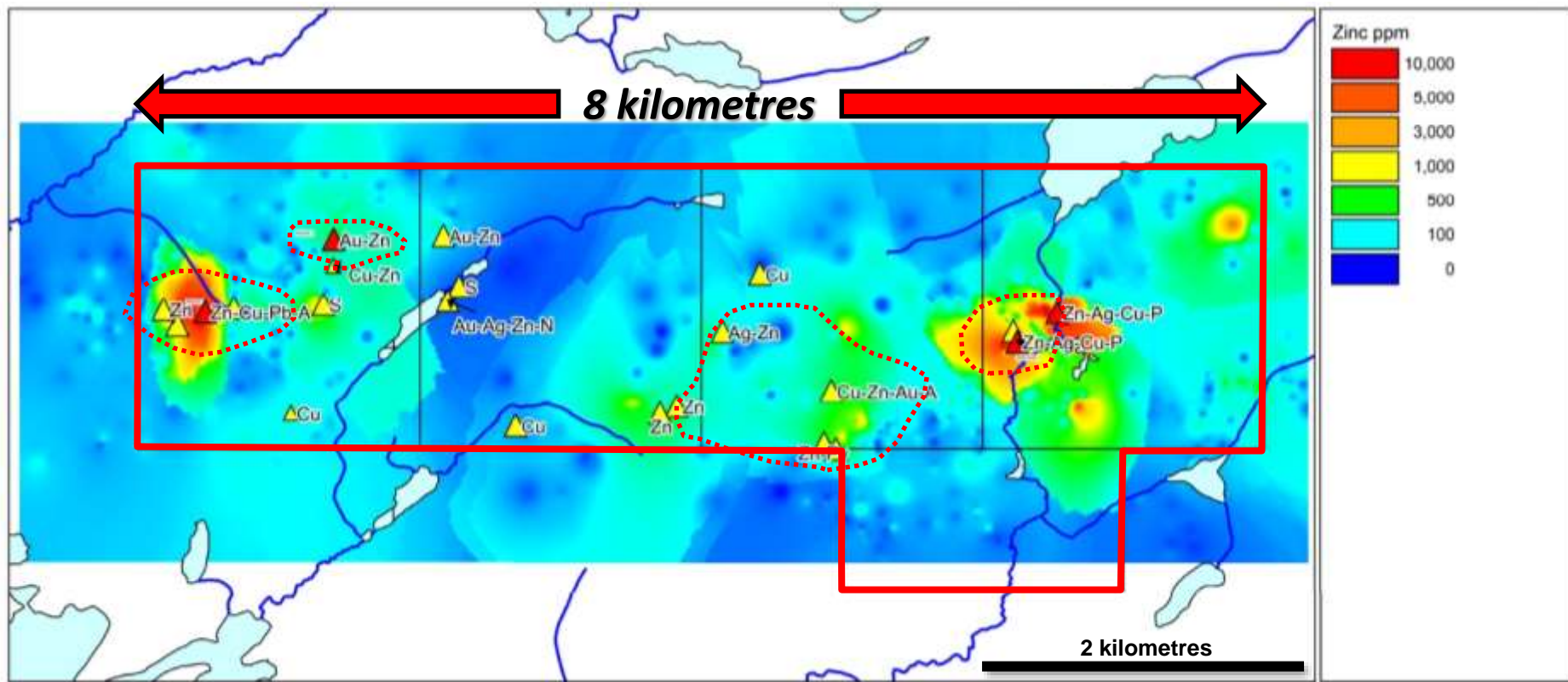
Principal chargeability anomalies east of Relf to west Nakina targets

Melchett Lake - Geochemistry



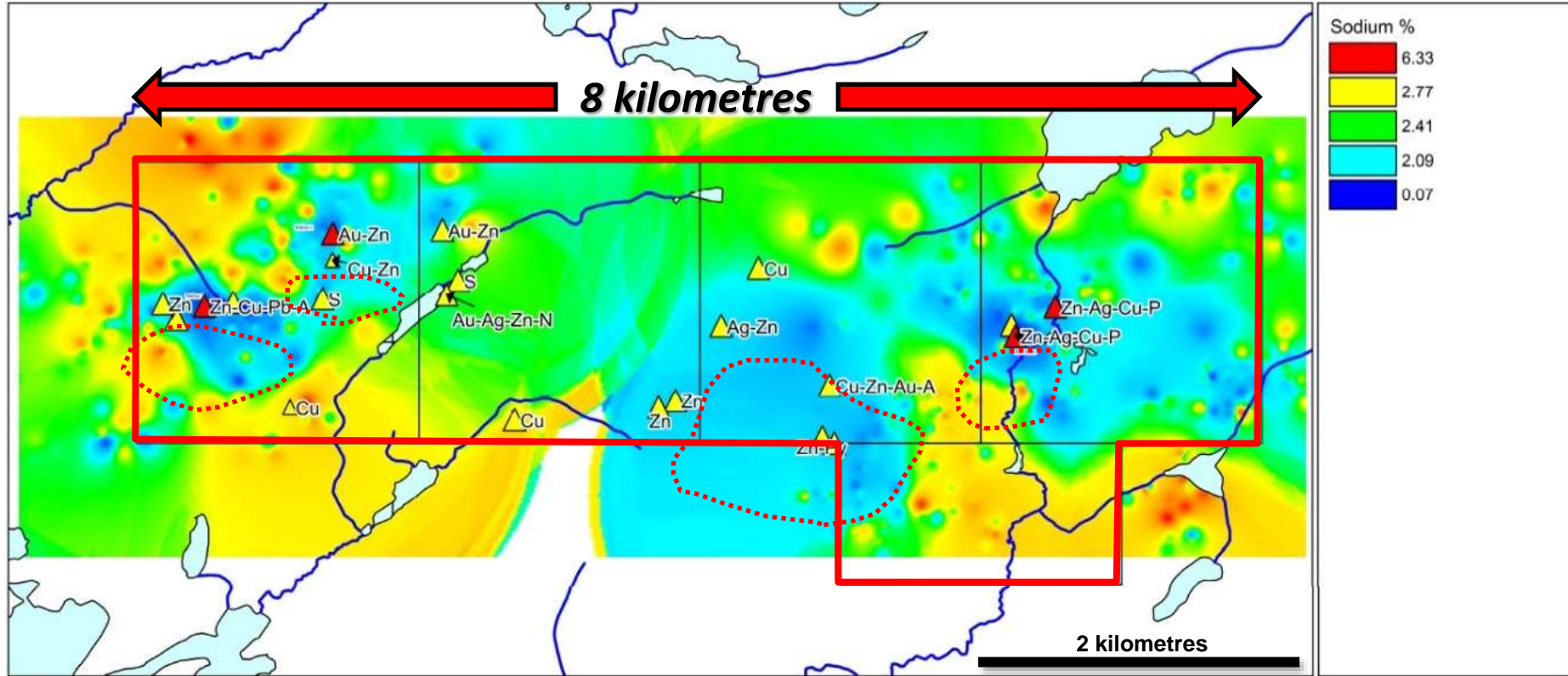
Contoured silver analyses from grab rock samples

Melchett Lake - Geochemistry



Contoured zinc analyses from grab rock samples

Melchett Lake - Geochemistry



Principal sodium depletion anomalies from grab rock sampling

Melchett Lake and Geco Comparison

Style, Grade, Size, Structure and Location with Potential

- ✓ Polymetallic Zn-Pb-Cu-Ag-Au VMS mineralization e.g., Matabi, Winston Lake, Brunswick
- ✓ Amphibolite grade in greenstone belt near Manitouwadge Ontario metasedimentary belt
- ✓ Principal host quartz - muscovite schist overlain by iron formation
- ✓ Typical steep to vertical E-W orientation with ESE rake (Geco 20°- 35°)
- ✓ Tight folding, multi-stage deformation and remobilization, fold repetition locally indicated
- ✓ Z-Drag fold in D3 fold nose at Geco; **22 km strike length known at Melchett** (nose to east?)
- ✓ Metal zoning, zinc shallow, copper increase at depth; Cu/Zn and alteration higher with depth
- ✓ Multi-element depletion and enrichment zones; distinctive alteration mineralogy
- ✓ Geco - massive to semi-massive to stockwork
- ✓ Melchett - stratiform to disseminated; stockwork intersected at depth in Relf Zone?
- ✓ Geco - core zone to 100m massive Cp-Sp-Py-Po to disseminated <5m Sp-Py to <70m Cp-Py-Po in Qz-Sericite
- ✓ Geco - upper Sp-Py zone as per **Relf at Melchett (13.7m trench 13%Zn, 293 g/tAg, 0.26%Cu)**
- ✓ Melchett - broad intervals (>200 m) and depths (>500m) Sp-Py-Cp in Qz-Sericite
- ✓ Melchett - adjacent to massive sulphide? – downhole Maxwell model targets
- ✓ Road access to Geco mine; good road to Melchett ~5km, lake access, winter trail



Geco Mine Value Summary

Style, Grade, Size, Structure and Location with Potential

- ✓ Discovered 1953
 - ✓ 15Mt at production decision 1954
 - ✓ Operating mine 1957
 - ✓ Closure 1995
 - ✓ Total resource 58 Mt
 - ✓ **33 years pit and U/G production** 48 Mt
 - ✓ Mine grade 4% Zn, 2% Cu, 52 g/t Ag, 0.3% Pb
-
- ✓ Startup valuation \$293 million; **resource growth 15Mt to 58Mt during mine life**
 - ✓ 4,000-5,000 tpd mine and mill, main and 3 internal shafts; max depth 1320 metres
 - ✓ Mill recovery average Cu 92%, Zn 83%, Ag 72%
 - ✓ Annual production Cu 20Kt-30Kt, Zn 32Kt-71Kt, Ag 1.2-1.6MOz
 - ✓ **Annual average value** recovered \$300,000,000 (Dec 2020 metal price\$)



Melchett Lake - Exploration Plans and Budgets

- ✓ Line-cutting for Spartan MT survey, Q4 2024
- ✓ Contracts Quantec Geoscience for Spartan survey, Q1/2 2025
- ✓ GIS Compilation, Re-Interpretation of BHPEM, HeliTEM and Regional Magnetic Surveys 2024/2025 ongoing
- ✓ Structural and lineament mapping, Prospecting, Soil and Rock Geochemistry, Targeted geological mapping Q2/3 2025
- ✓ Drilling - Phase 1 Au and Ag-Zn, 2,500m, Phase 2 Au and Ag/Zn 5,000m 2025
- ✓ Phase 1 Budget \$600,000 to Q4 2024
- ✓ Phase 2 Budget \$900,000 incl. fall drilling to Q1/2 2025
- ✓ Phase 3 Budget \$1,500,000 incl. winter drilling to Q2/3 2025



“Seizing Opportunity and Creating Value”



EXPLORING in CANADA **MYSTERY** Au Project

TSX Venture: SSE
US OTCQB: SSEBF
Frankfurt: S6Q

www.silverspruceresources.com

October 2024



***Mystery
Au Project,
Newfoundland
and Labrador,
Canada***



Mystery - Project Overview

- ✓ Silver Spruce is earning a 100% interest in the **14,790-hectare Mystery, Till and Marilyn** properties
- ✓ Exploits Subzone Gold Belt in central Newfoundland near Sokoman Minerals and New Found Gold discoveries. Grassroots stage property
- ✓ Mystery optioned the original 8,750 hectares in 2021 and later acquired, by staking, contiguous claims covering 6,040 hectares
- ✓ Vendor and due diligence samples mainly 1-3 g/t Au, up to **12.5 g/t Au, with strong As and Sb association**, structural controls, laminated to brecciated quartz \pm chalcedony \pm carbonate veins
- ✓ Analogues of epithermal to mesothermal deposits with extensive structurally controlled, locally high to very high grade vein and breccia-hosted mineralization reported in nearby properties and international projects

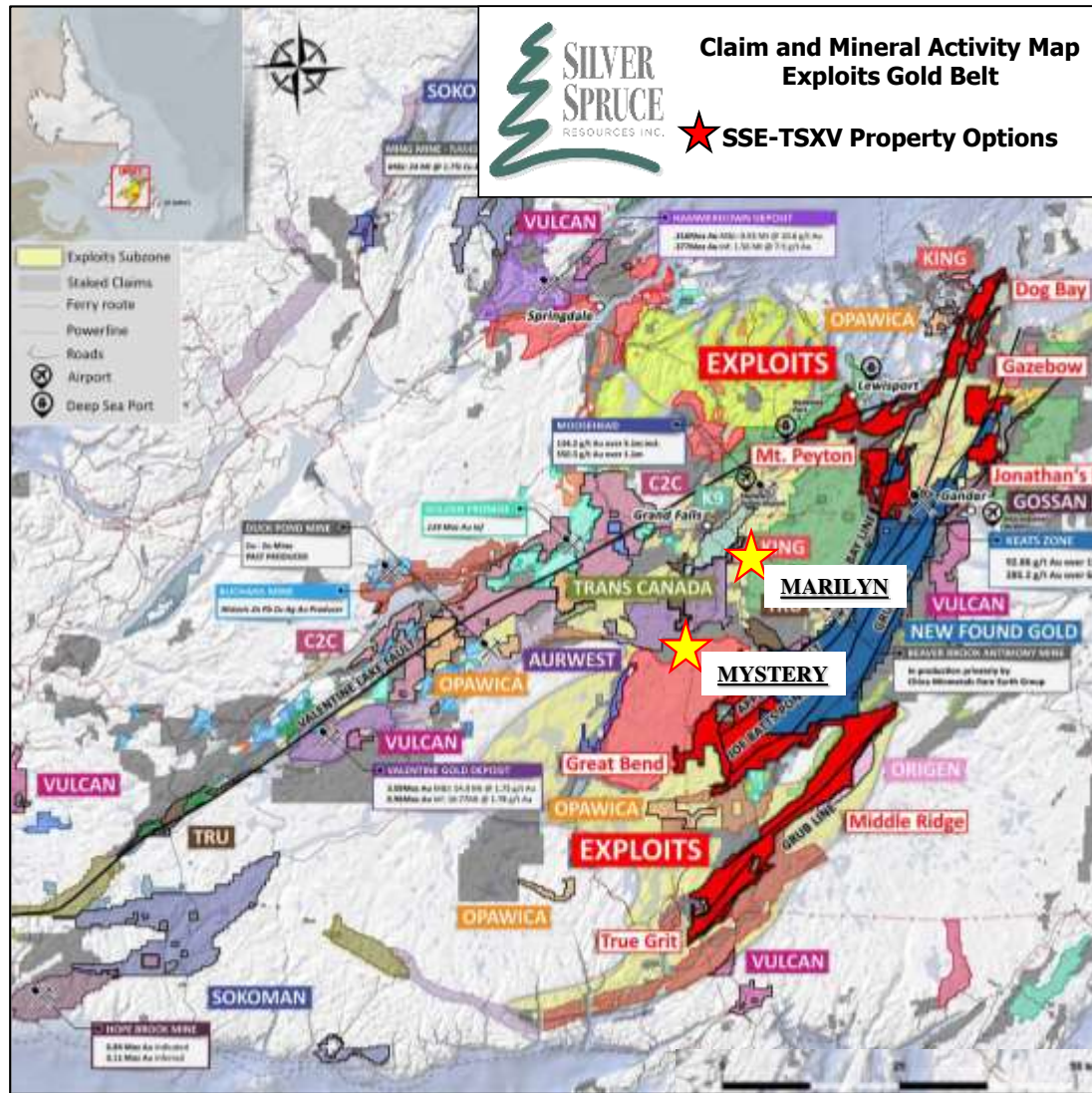


Mystery - The Potential

- ✓ *Our initial site exploration verified mineral and rock textures common to shallow epithermal and/or orogenic 'mesothermal or lode' vein-style mineralization with Au-As±Sb geochemical association*
- ✓ *Highly anomalous As compared even to known high profile projects*
- ✓ *These key points consistent with the regional Exploits Gold Belt, Newfoundland discoveries, such as Queensway, and significant global analogues such as Fosterville, Australia*
- ✓ *Multi-million ounce gold resources identified along major structures in NL (Valentine) and comparable in ON (Abitibi)*
- ✓ *Beaverbrook Sb Mine west of Queensway*
- ✓ *Newfoundland offers a favorable regulatory environment, supportive communities, outstanding provincial geological survey, near year-round operating conditions, excellent property access and significant potential for new deposits*



Mystery - Regional Gold District



- ✓ Located 30-50 km west of New Found Gold's Queensway project and 15-35 km south of Sokoman's Moosehead gold project, central Newfoundland
- ✓ Strategic location in active exploration camp
- ✓ Proximal to major and secondary structural features defined by geophysical and geological coverage
- ✓ Highway, forestry road and trail-accessible claims comprising 14,790 hectares



Mystery - The Property

- ✓ **Historical rock sampling to 12.5 g/t Au**
- ✓ **Definitive Purchase Agreement for 100% interest signed**
- ✓ **Due diligence verification assays to 8.0 g/t Au**
- ✓ Additional contiguous claims staked raising footprint to 14,790 hectares
- ✓ Multiple occurrences are reported of agate chalcedony to colloform and crystalline silica veining, carbonate replacement by quartz, and open-space filling quartz and calcite
- ✓ Textures indicative of epithermal systems and/or structurally controlled mesothermal vein development analogous to Queensway and similar international deposits



Mystery - Proximity to Regional Structures



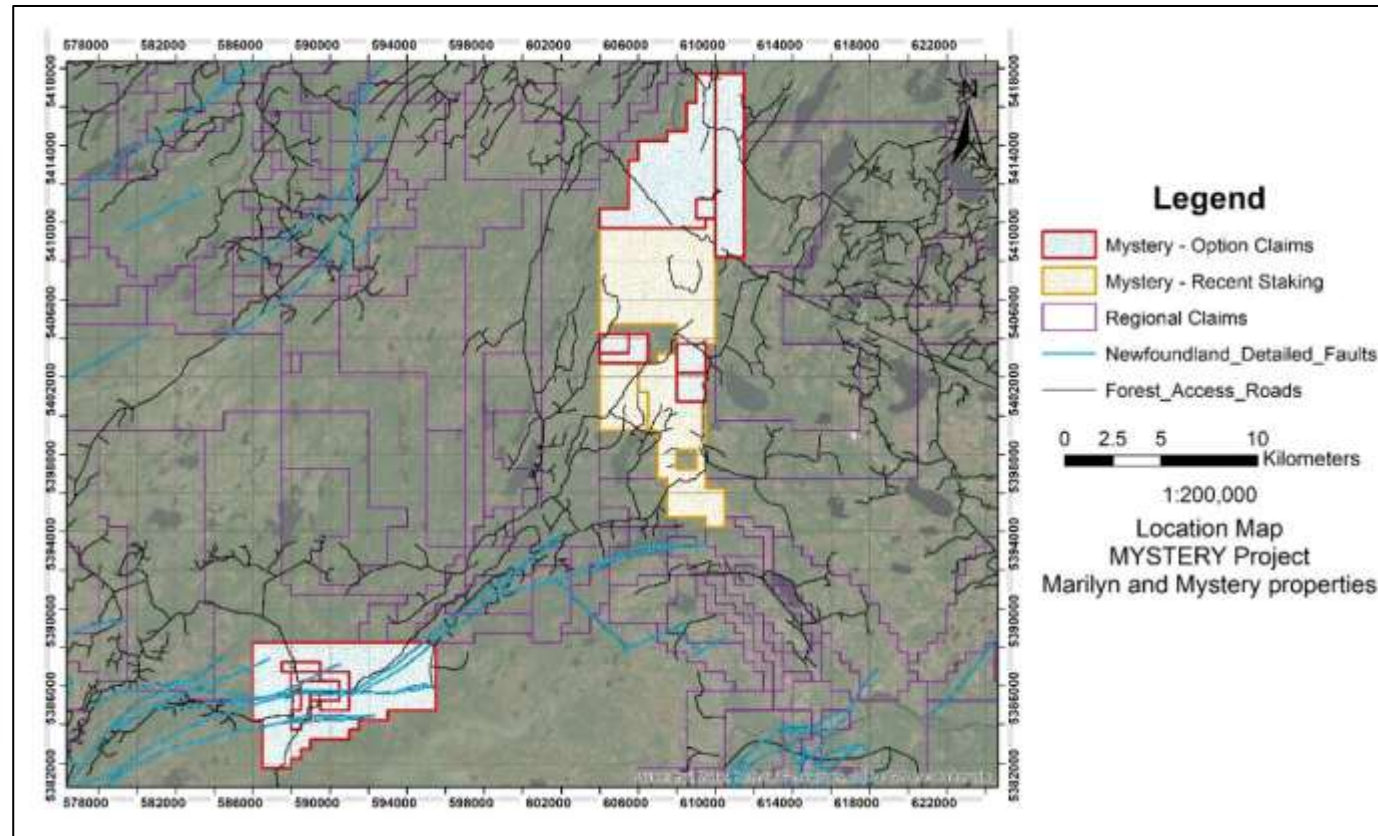
We are targeting regional faults and proximal primary to tertiary order structural sets, zones showing strike shift, potential dilation, high resistivity associated with silicification, among other geochemical indicators of mesothermal to epithermal gold

Mystery - Exploration

- ✓ **Permitting Q4 2021**
- ✓ **New airborne geophysics Q1 2022**
- ✓ **Gold Grain Till Sampling 2022, 2023**
- ✓ **Till Processing and Assays 2022, 2023**
- ✓ GIS Compilation ongoing
- ✓ Review and Interpretation of Regional and Property Geophysical Surveys Q2 2024
- ✓ Structural and Lineament Mapping Q4 2024
- ✓ Gold Grain Till Sampling recon surveys done
- ✓ Till Processing and Assays done
- ✓ Prospecting, Soil and Rock Geochemistry, Alteration, Targeted mapping 2023 initiated
- ✓ Permit completed for drilling Q4 2023
- ✓ Drilling Completed Q4 2023, Q1/2 2024



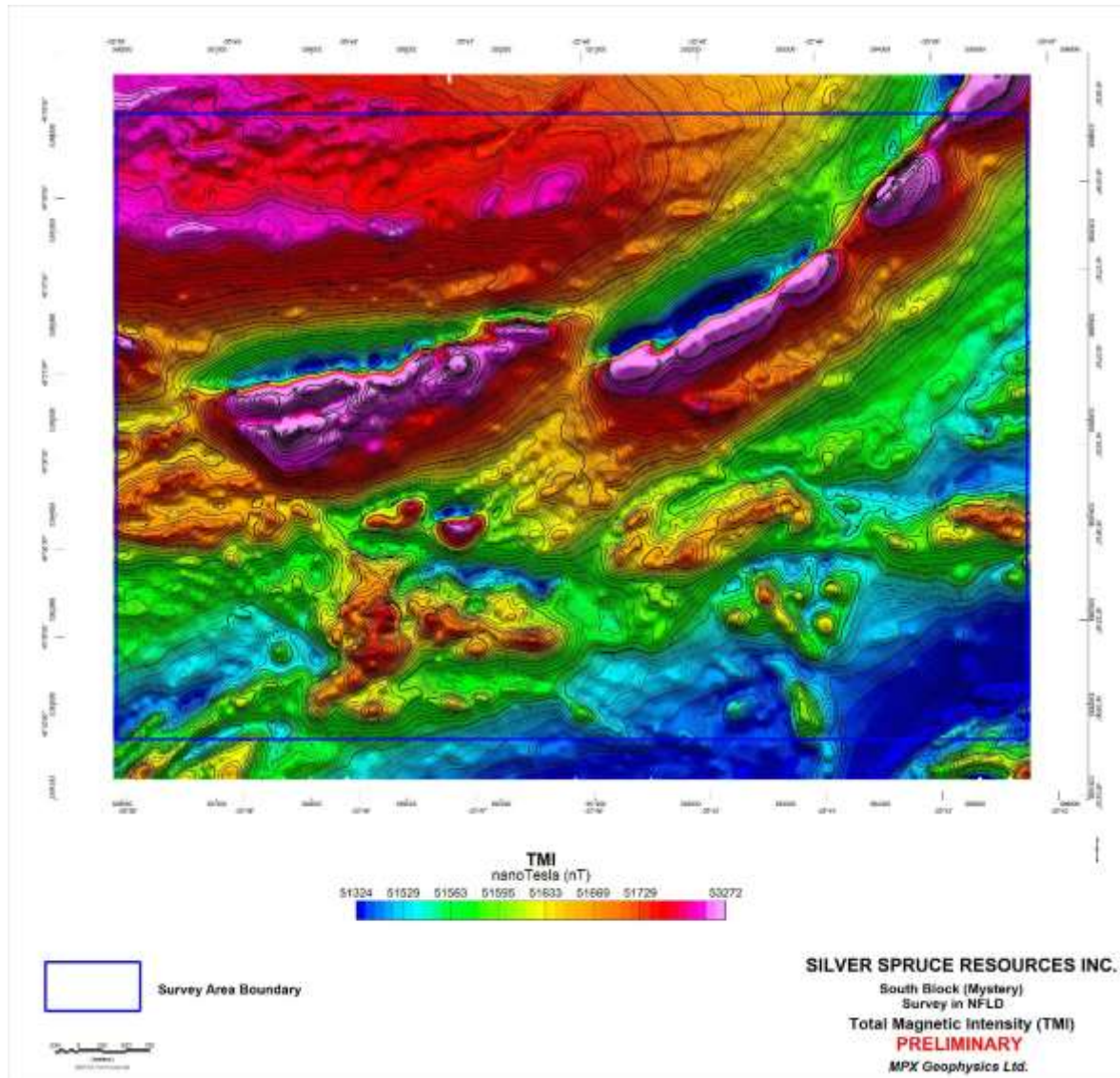
Mystery - Exploration Claims



“We now have two major claim blocks, great access, prospective geology with only limited exploration and no history of drilling, proximal to showings on western boundary, airborne geophysics and till sampling completed, more ground sampling to follow with early targets identified”



Mystery - 2022 Airborne Geophysics



MPX Geophysics
Feb 2022
Preliminary Map

Total Field Magnetism
(TMI)

Multiple rock types offset
by branching and
intersecting structural
trends which are key to
localization of regional
gold mineralization



Mystery - Exploration Plans

- ✓ GIS Compilation Q4 2021 to Q4 2024
- ✓ Review and Interpretation of Regional and Property Geophysical Surveys Q2/3 2023
- ✓ Structural, Lineament Mapping Q2/4 2024
- ✓ Gold Grain Till Sampling Q3 2024
- ✓ Till Processing, Assays Q3 2024, Q1 2025
- ✓ Prospecting, Soil and Rock Geochemistry, Alteration, Targeted mapping Q2/3 2023
- ✓ Drilling Q1 2024
- ✓ Permit preparation 2nd drilling Q1/2 2025
- ✓ Drilling proposed Q2/3 2025
- ✓ Budget - Phase 1 \$300,000 - \$350,000
- ✓ Budget - Phase 2 \$600,000 - \$750,000



Project Locations - Mexico



Mexico - The Potential

- ✓ Located within northwest-trending “Sonora Gold Belt” in Sierra Madre and parallel to Au-Ag-rich Mojave-Sonora Megashear
- ✓ Properties well located near Coeur’s Palmarejo Au-Ag Mine, Minera Alamos’ Santana/Nicho Au Mine and others
- ✓ **Diamante - Ten showings** with many high-grade Au-Ag values on multiple vein, skarn and porphyry targets
- ✓ Two drill programs completed
- ✓ **Jackie - Greenfields Au-Ag** discovery over 200m x 400m target in 2021; low to high grade opportunity
- ✓ **Pino de Plata - Twelve Ag-Pb-Zn targets**; located in western Chihuahua, disseminated epithermal, replacement and skarn carbonate, and veins
- ✓ Low to high grade precious metals and base metals provide discrete opportunities for in-house or partnered development



Project Overview - Mexico

- ✓ **Jackie** - There is **no prior exploration** reported on the Property with high Au-Ag assays to **9.65 g/t Au and 515 g/t Ag** in new discovery
- ✓ **Diamante** - **Ten known showings** at La Prieta-El Aguaje, El Chon, El Pillado, La Olla, Lupita, Mezquite Raizudo, El Puerto, El Cumbro, Calton and Anomalía Sur
- ✓ Historical sampling has reported outstanding values up to **39.8 g/t Au, 3,460 g/t Ag, 18.2% Pb and 33.5% Zn** from mine dumps, slag, and vein and stockwork
- ✓ SSE due diligence assays range from 0.127 g/t Au to 1.195 g/t Au associated with up to 837 g/t Ag and 6.87% Zn with Cu, Pb and well-defined heavy metal pathfinder elements
- ✓ **Pino de Plata** - **Greenfields Au-Ag** discovery over 200m x 400m target in 2021; low to high grade opportunity
- ✓ **El Mezquite** - **Historical artisanal mining** in highly altered and oxidized andesites, rhyolitic breccias and veins, coincident chargeability highs, geochemical and structural trends with up to **3.41 g/t Au and 387 g/t Ag**, project returned to Vendor



“Seizing Opportunity and Creating Value”



EXPLORING in MEXICO *PINO de PLATA*** Ag-Pb-Zn Project**

TSX Venture: SSE
US OTCQB: SSEBF
Frankfurt: S6Q

www.silverspruceresources.com

October 2024

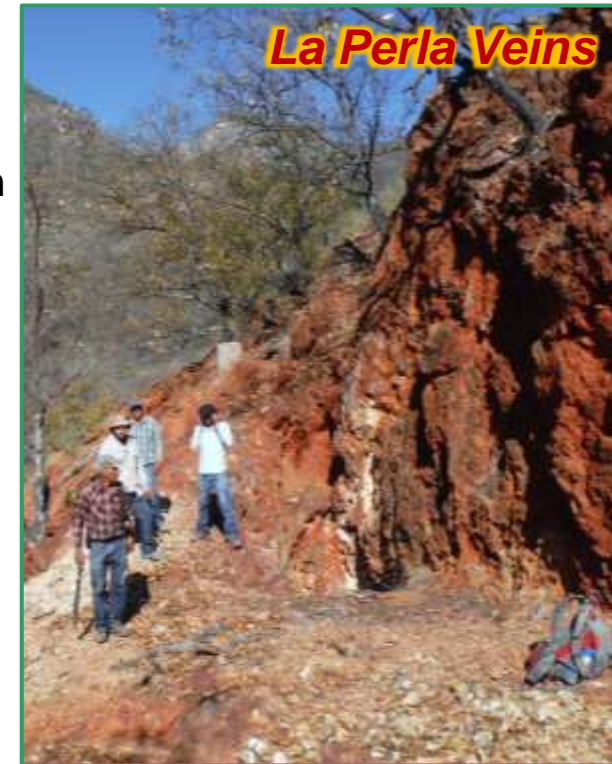


***Pino de Plata
Ag-Au Project,
Chihuahua,
Mexico***



Pino de Plata - The Property

- ✓ Located 15 km away from Coeur Mining's flagship Palmarejo Mine in Chihuahua, Mexico
- ✓ Four road-accessible concessions comprising 397 hectares in the heart of the Sierra Madre Occidental gold-silver belt
- ✓ Definitive Purchase Agreement for 100% interest in 2015
- ✓ Negotiated Favorable Amendments to Option Deal in 2024
- ✓ Landowner access negotiations in progress 2024
- ✓ Surface exposures and dumps have yielded high silver and base metal values
- ✓ **Permitting for 30 drill pads was approved in 2018**
- ✓ Twelve targets identified for immediate Phase I drilling in 2019
- ✓ Disseminated epithermal, replacement and skarn carbonate, and vein targets



Pino de Plata - Epithermal Targets



El Terrero Vein sampled 1130 g/t Ag with 3.72% Pb for 1278 g/t AgEq. Seven out of nine samples **>1 oz/t (31.25 g/t) Ag and up to 17.8 oz/t (557 g/t) Ag.**

Pino de Plata - Vein Targets



The La Perla, Sierpe I & II and Theodora veins are open on strike and have indications of high grade **>8 opt (250 g/t) Ag**

Pino de Plata - Carbonate Replacement Targets



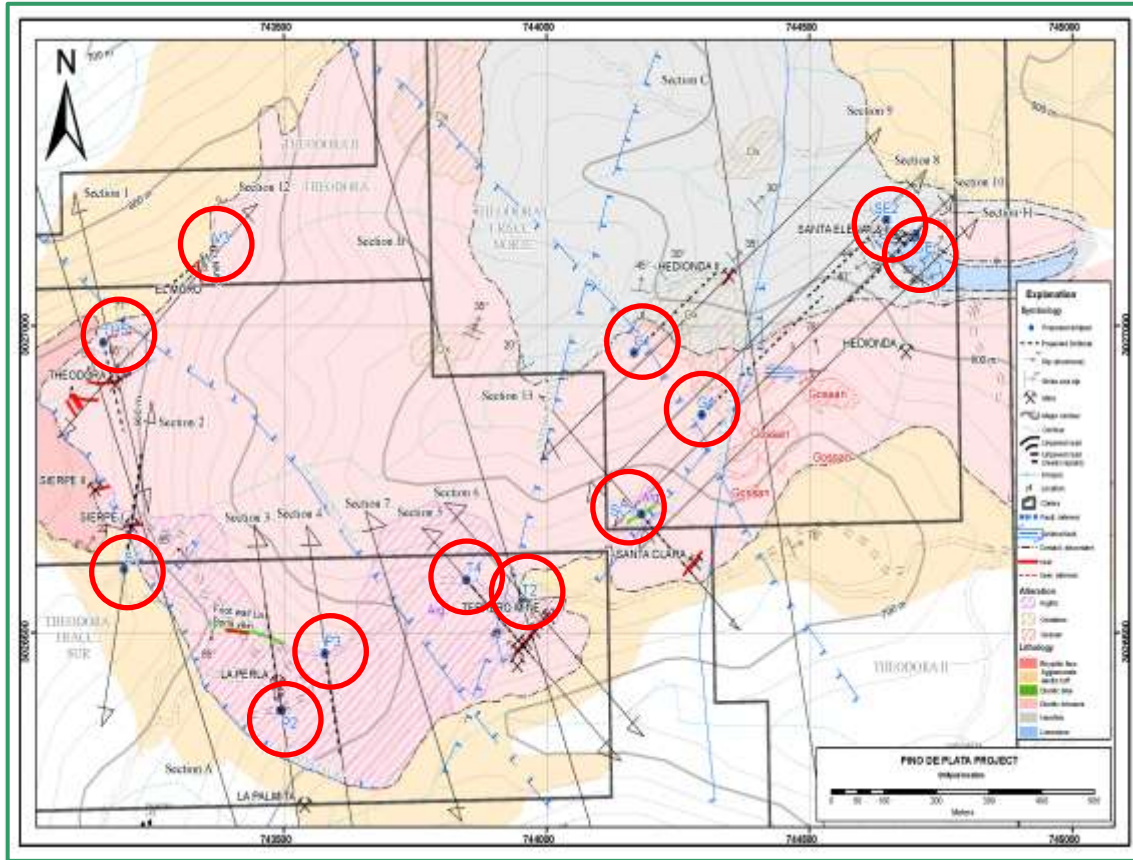
Santa Elena - Gossan Area is a viable target for replacement Ag-Pb-Zn-Cu deposits where extensive gossans are anomalous in Ag and base metals, unoxidized replacement mineralization approaches **200 g/t Ag** with potential for relatively shallow mineralization over an area of >20Ha

Pino de Plata - Exploration and Plans

- ✓ LiDAR survey completed in 2021
- ✓ LiDAR interpretation in progress
- ✓ **Re-negotiation of Option Agreement**
- ✓ **Signing of Landowner Access Agreement**
- ✓ **Drilling - Phase 1 20-30 sites 1,500m to 2,000m**
- ✓ ArcGIS compilation
- ✓ Geological, structural and lineament mapping
- ✓ Rock and trench sampling, hyperspectral analysis



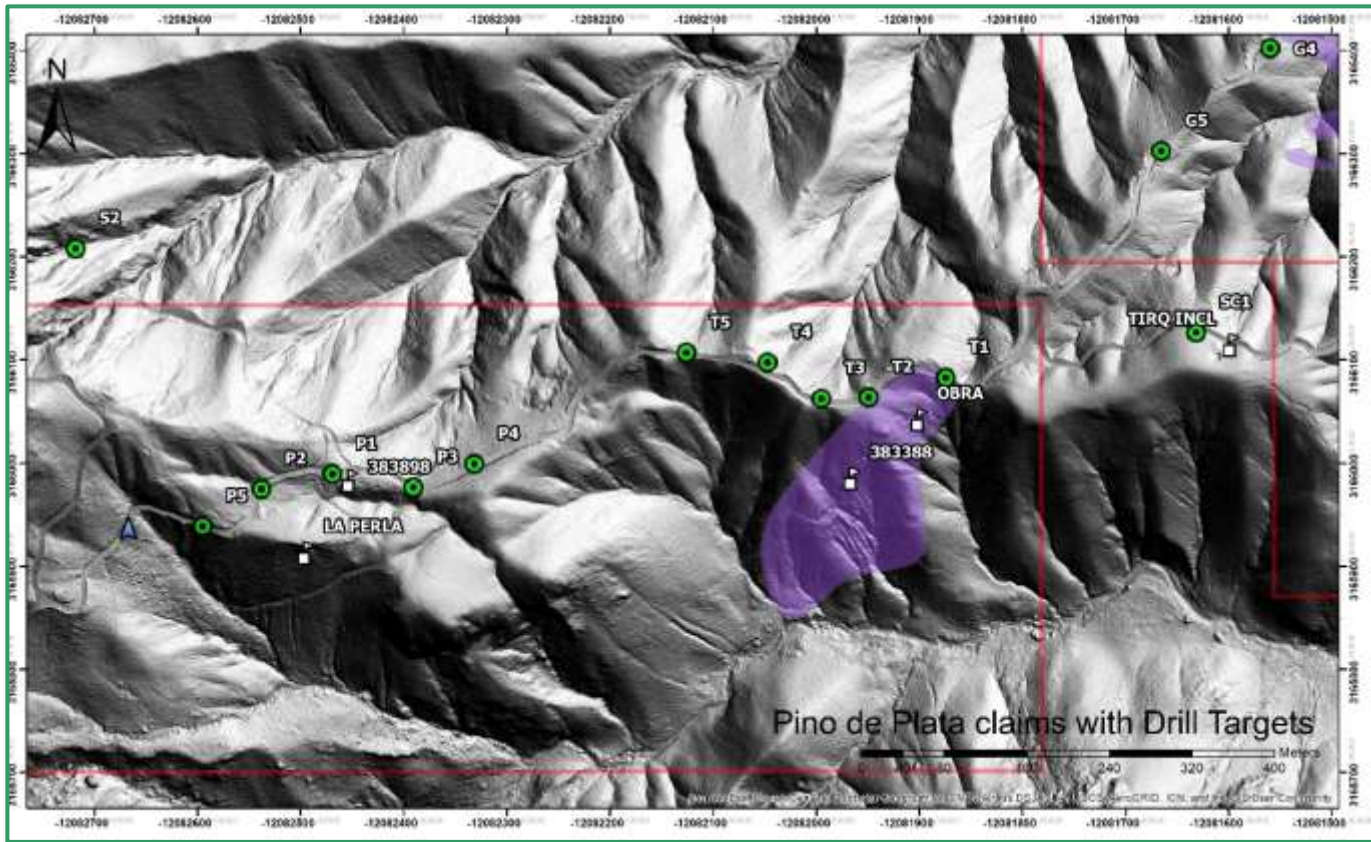
Drilling Plan



Geological map with section lines and twelve (12) proposed drill pads (dark blue symbols circled in red), collar location, azimuth and orientation, and projected depth showing distribution across property.



Pino de Plata - Exploration Quote



"We have final receipt of flight data from our recently completed LiDAR survey and are updating the Pino de Plata ArcGIS database while negotiations remain ongoing to reach an access agreement with the landowner to permit drilling on several highly promising silver targets. The new LiDAR data will provide high resolution topographic control for the proposed Phase 1 drill program. Plans in place for expedited Phase 1 drilling."



Pino de Plata - LiDAR Mapping



LiDAR enhanced digital elevation map with drill targets
looking south across Pino de Plata property



“Seizing Opportunity and Creating Value”



EXPLORING in MEXICO *Diamante* Au-Ag-Zn-Pb Project

TSX Venture: SSE
US OTCQB: SSEBF
Frankfurt: S6Q

www.silverspruceresources.com

October 2024



Diamante Au-Ag Project, Sonora, Mexico



Diamante - The Property

- ✓ Located 54km SW of Mulatos and 60km SW of La India Mines in the Sierra Madre Occidental gold-silver belt, 10km W of Nicho deposit
- ✓ Road and trail-accessible concessions comprising 1,057 hectares located 165km SE of Hermosillo
- ✓ Multiple Exploration Targets in vein, skarn and disseminated mineralization at La Prieta-El Aguaje, El Chon, El Pillado, La Olla, Lupita, Mezquite Raizudo, El Puerto, El Cumbro, Calton and Anomalía Sur
- ✓ Artisanal mining and limited exploration
- ✓ West and adjacent to Jackie joint venture
- ✓ Option Agreement to earn up to 50% interest
- ✓ Historical sampling reports up to 39.8 g/t Au, 3,460 g/t Ag, 18.2% Pb and 33.5% Zn in separate samples from surface, U/G and mine dumps



Large color anomaly with strong clay, hematite, jarosite alteration

Diamante - Location, Access, Targets



Diamante - Recent Exploration

- ✓ Airborne LiDAR survey completed to provide high resolution topography and imagery
- ✓ Regional satellite hyperspectral interpretation completed
- ✓ LiDAR survey structural interpretation planned
- ✓ Preliminary geological mapping and rock sampling completed
- ✓ ArcGIS map compilation ongoing
- ✓ Due diligence sampling verifies several Au-Ag-Pb-Zn-Cu targets with artisanal working and mine dumps with **1.19 g/t Au, 834 g/t Ag, 1.2% Pb and 6.8% Zn**
- ✓ **Phase 1 ground geological targeting on known workings and mineralization completed**
- ✓ **Environmental report completed with receipt of drill permits**
- ✓ Phase 1 drilling - approx. 2,000 metres
- ✓ Phase 2 drilling - approx. 1,500 metres



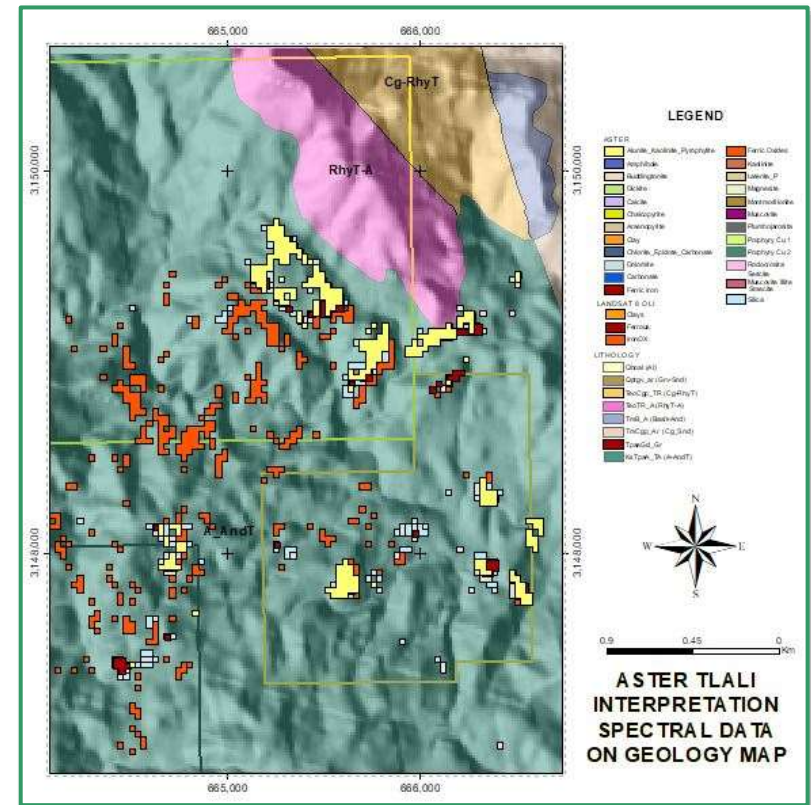
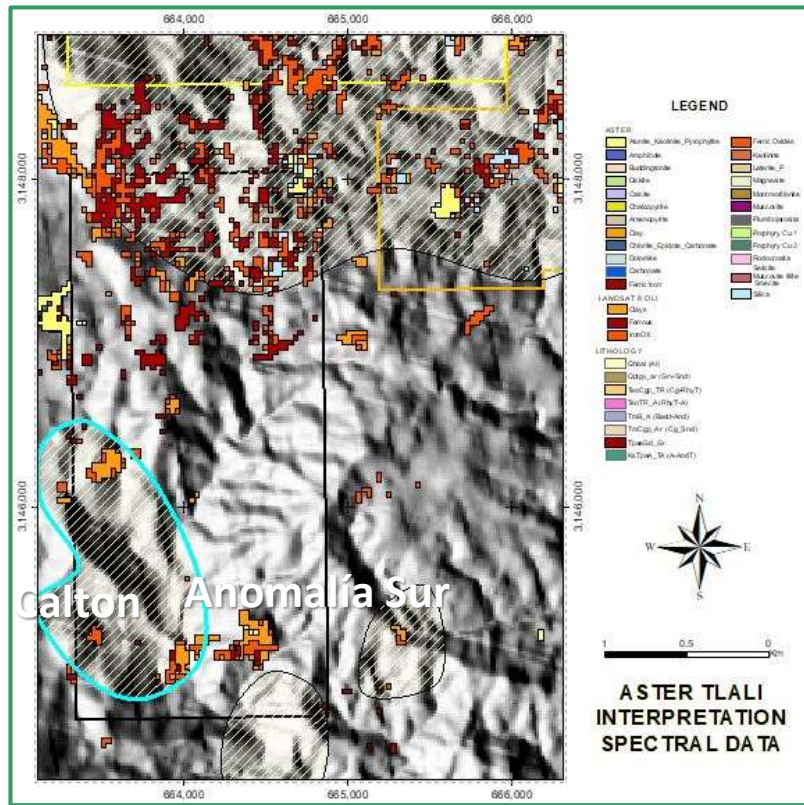
Diamante - Recent Exploration

- ✓ Drilling initiated in June 2022 at El Pillado target - 9 holes completed
- ✓ Drilling followed at La Prieta target - 10 holes completed
- ✓ Total drilling - 2,006 metres during June-July 2022
- ✓ El Pillado - Pb and Zn sulphide mineralization up to a combined 13.1 wt.% Pb+Zn, with elevated Ag to 397 g/t and Au to 0.934 g/t
- ✓ La Prieta - Pb and Zn sulphide mineralization up to a combined 18.35 wt.% Pb+Zn, with elevated Ag to 239 g/t and Au to 5.62 g/t
- ✓ AgEq grades of 200-870 g/t
- ✓ Intervals of 1.5 metres to 16 metres
- ✓ Mineralization associated with vein quartz and silicification and chlorite alteration
- ✓ **Local targets east of El Pillado and NNE from La Prieta**
- ✓ **New environmental report for drilling permit required for 2023 exploration**
- ✓ **Multi-phase geological mapping and drilling program proposed**



Chip logging with portable XRF in background

Diamante 1 & 2 - Exploration Overview



“The TLALI algorithm maps for the LANDSAT 8 OLI and combined LANDSAT 8/ASTER data, respectively, illustrate the spectral response for silicification and argillic alteration, including generic clay, alunite, pyrophyllite, kaolinite and silica, which are in part coincident with known artisanal vein workings e.g., Calton, and disseminated gold targets, such as the Southern Anomaly (Anomalia Sur) both in Diamante 2. New areas with little or no history of exploration also are indicated e.g., ~1 km north of Calton.”

Diamante 2022 Rock Sampling

- ✓ Completed geological mapping of drill targets
- ✓ Sample in image collected from Calton in Diamante 2 Concession
- ✓ Euhedral sulphides with tarnish
- ✓ Open space filling in pocket
- ✓ Preliminary PXRF (portable x-ray fluorescence) analysis reported 28 g/t Au
- ✓ Assays received from ALS Global in Hermosillo and Vancouver
- ✓ **Precious metals (Au to 51.5 g/t, Ag to 2,270 g/t), base metals (Pb to 42.3 wt.%, Zn to 22.9 wt.% and Cu to 3.2 wt.%)**
- ✓ Pathfinders each exhibited weak to highly anomalous values commonly with high Ag:Au and low to high Pb:Zn.
- ✓ Elevated Cu, Cd, Sb, Hg, As and Bi are linked commonly to Pb and/or Zn.

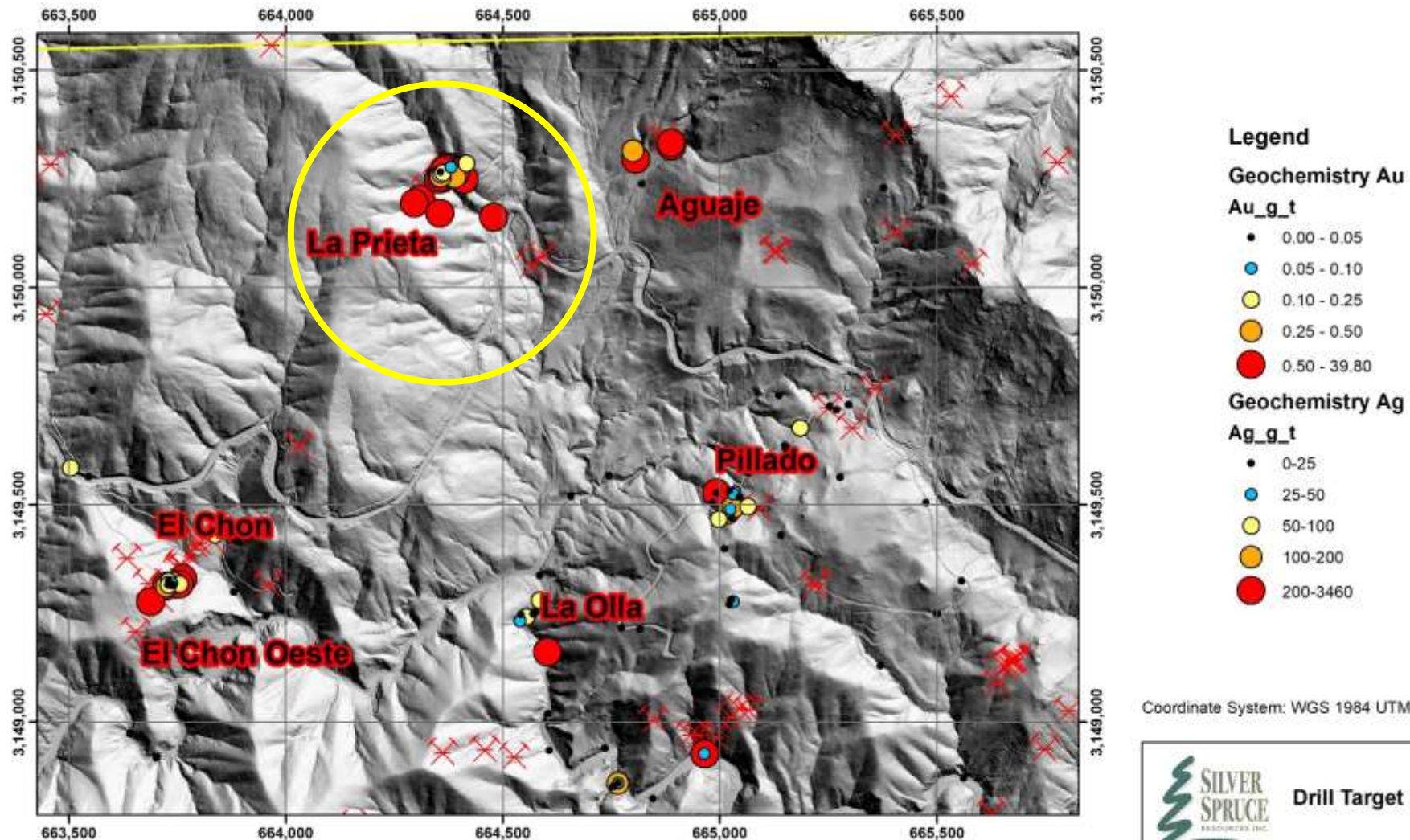


Diamante 2022 Rock Sampling (n=16 of 70)

| Target | Sample_ID | Au ppm | Ag ppm | Cu ppm | Pb % | Zn % |
|-------------------------|-----------|--------------|-------------|--------------|--------------|--------------|
| Calton | 707410 | 51.5 | 11.3 | 76 | 0.09 | 0.01 |
| Calton | 707413 | 7.57 | 186 | 948 | 6.28 | 0.10 |
| Mezquite Raizudo | 707441 | 3.31 | 191 | 168 | 0.47 | 0.05 |
| El Cumbro | 707418 | 2.99 | 2270 | 2910 | 4.38 | 0.09 |
| Mezquite Raizudo | 707439 | 2.08 | 533 | 1945 | 3.78 | 7.47 |
| La Prieta | 707469 | 1.805 | 199 | 697 | 2.86 | 0.20 |
| La Prieta | 707468 | 1.41 | 140 | 1755 | 2.64 | 3.59 |
| El Chon | 707449 | 1.385 | 1980 | 88 | 11.10 | 0.01 |
| La Prieta | 707464 | 1.34 | 100 | 32000 | 5.67 | 16.75 |
| Aguaje | 707472 | 1.07 | 24.5 | 149 | 0.43 | 1.15 |
| La Prieta | 707470 | 0.939 | 223 | 2680 | 4.00 | 6.48 |
| El Chon | 707452 | 0.719 | 226 | 29 | 2.38 | 0.04 |
| El Chon Oeste | 707433 | 0.307 | 510 | 1620 | 0.47 | 0.04 |
| Pillado | 707460 | 0.27 | 81.8 | 589 | 3.60 | 22.90 |
| Pillado | 707453 | 0.197 | 1310 | 3740 | 42.32 | 8.20 |
| Calton | 707403 | 0.06 | 69.5 | 1225 | 2.48 | 5.91 |



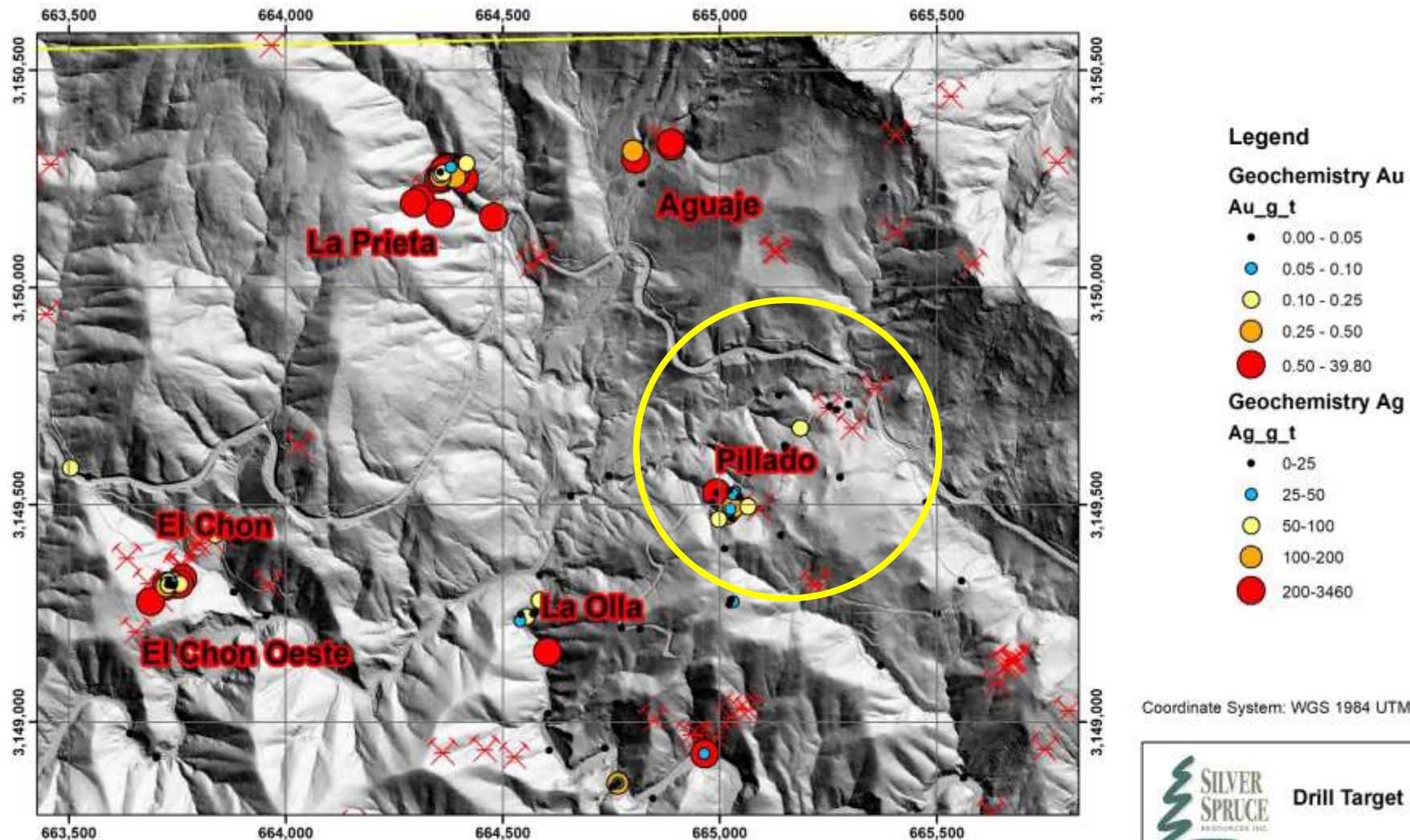
Diamante 1 - Workings and Drill Targets



Drill Target Map

February 23, 2022

Diamante 1 - Workings and Drill Targets



Drill Target Map

February 23, 2022

Diamante 1 - La Prieta Artisanal Mining



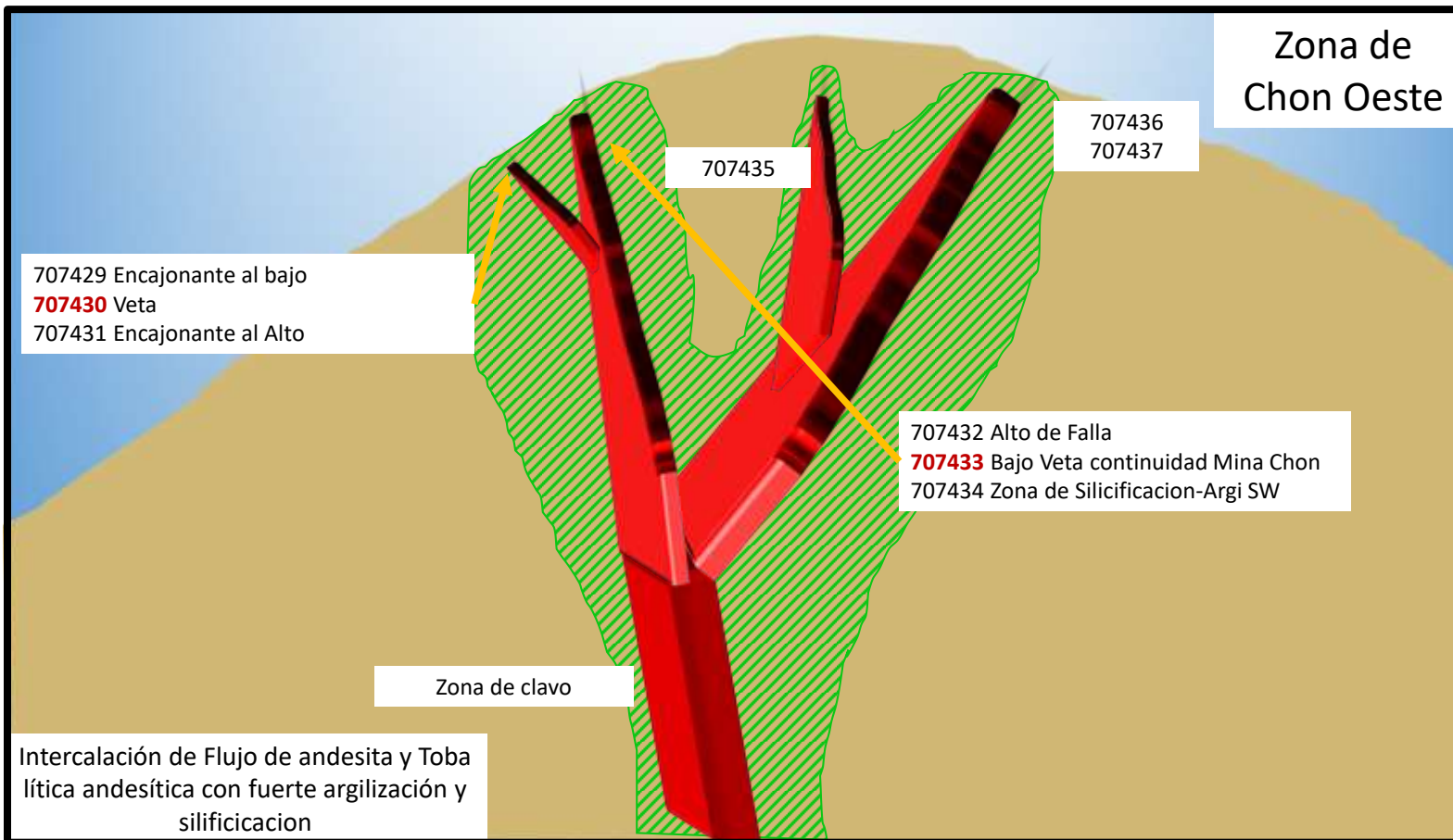
Diamante 1 – El Pillado Artisanal Mining



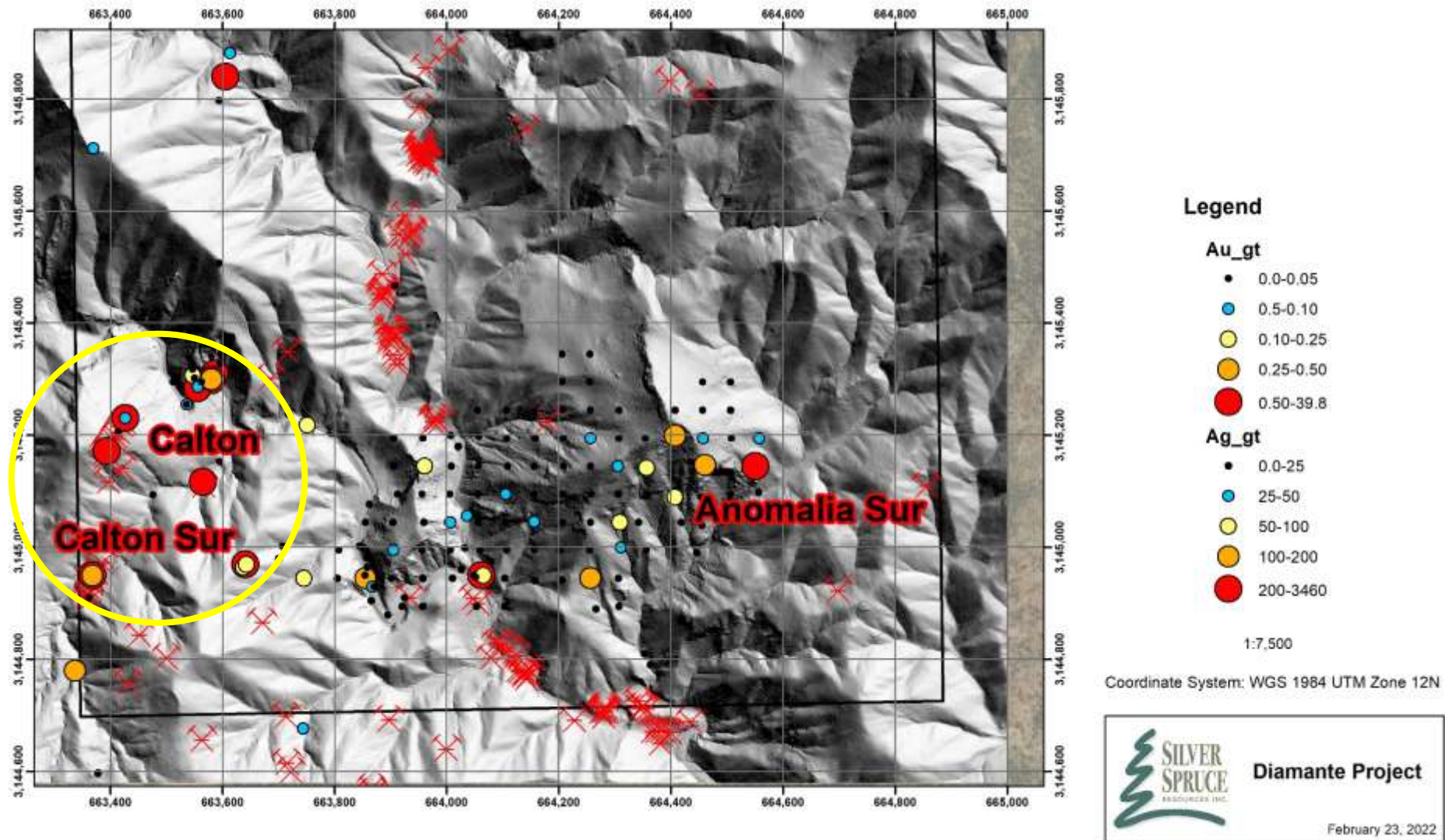
Diamante 1 - El Chon Sampling, Artisanal Mining



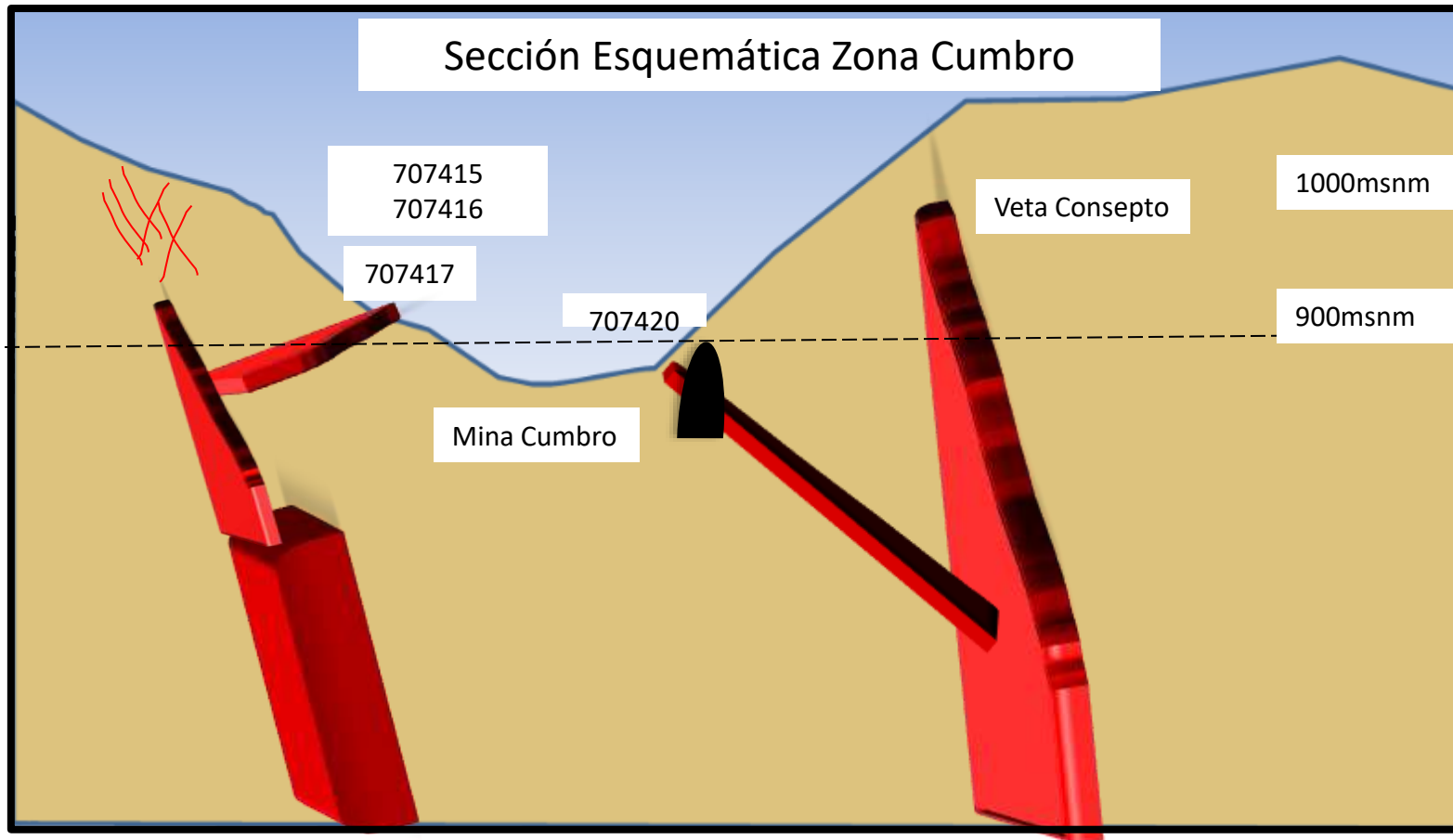
Diamante 1 - El Chon Schematic Section



Diamante 2 - Workings and Drill Targets

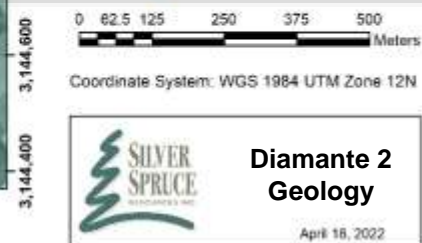
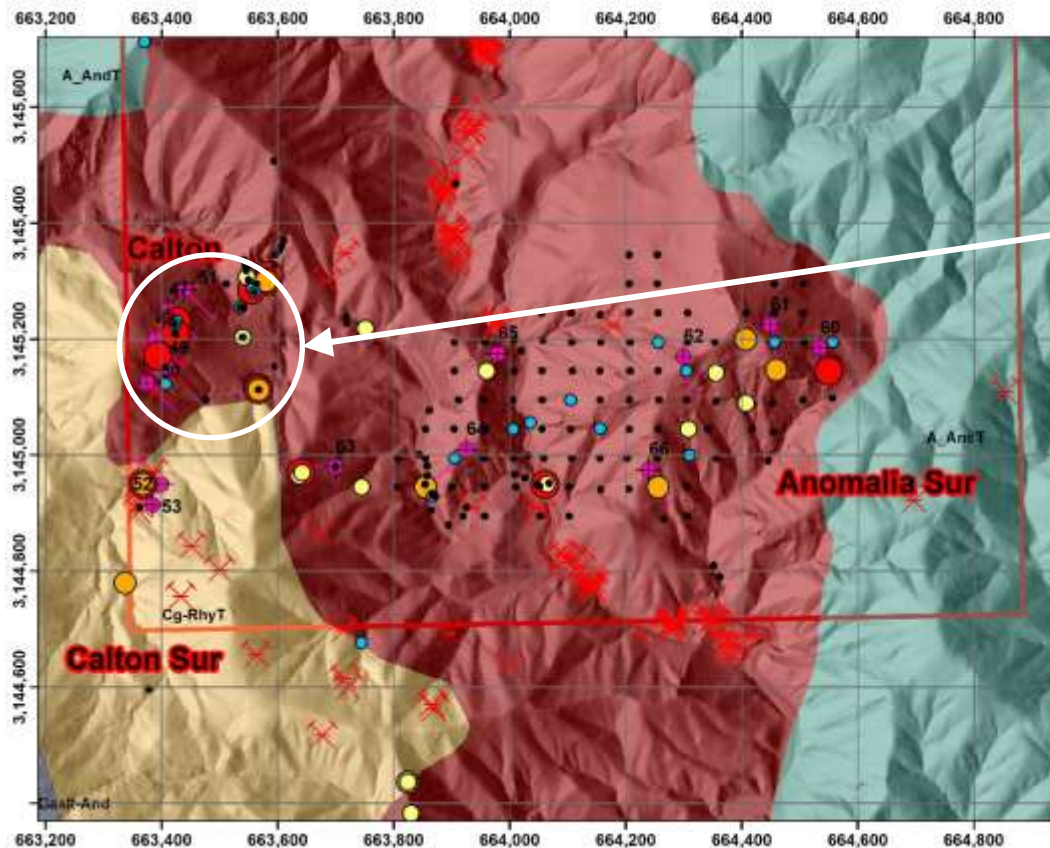


Diamante 2 - Phase 1 Drill Exploration



Diamante 2022 Rock Sampling

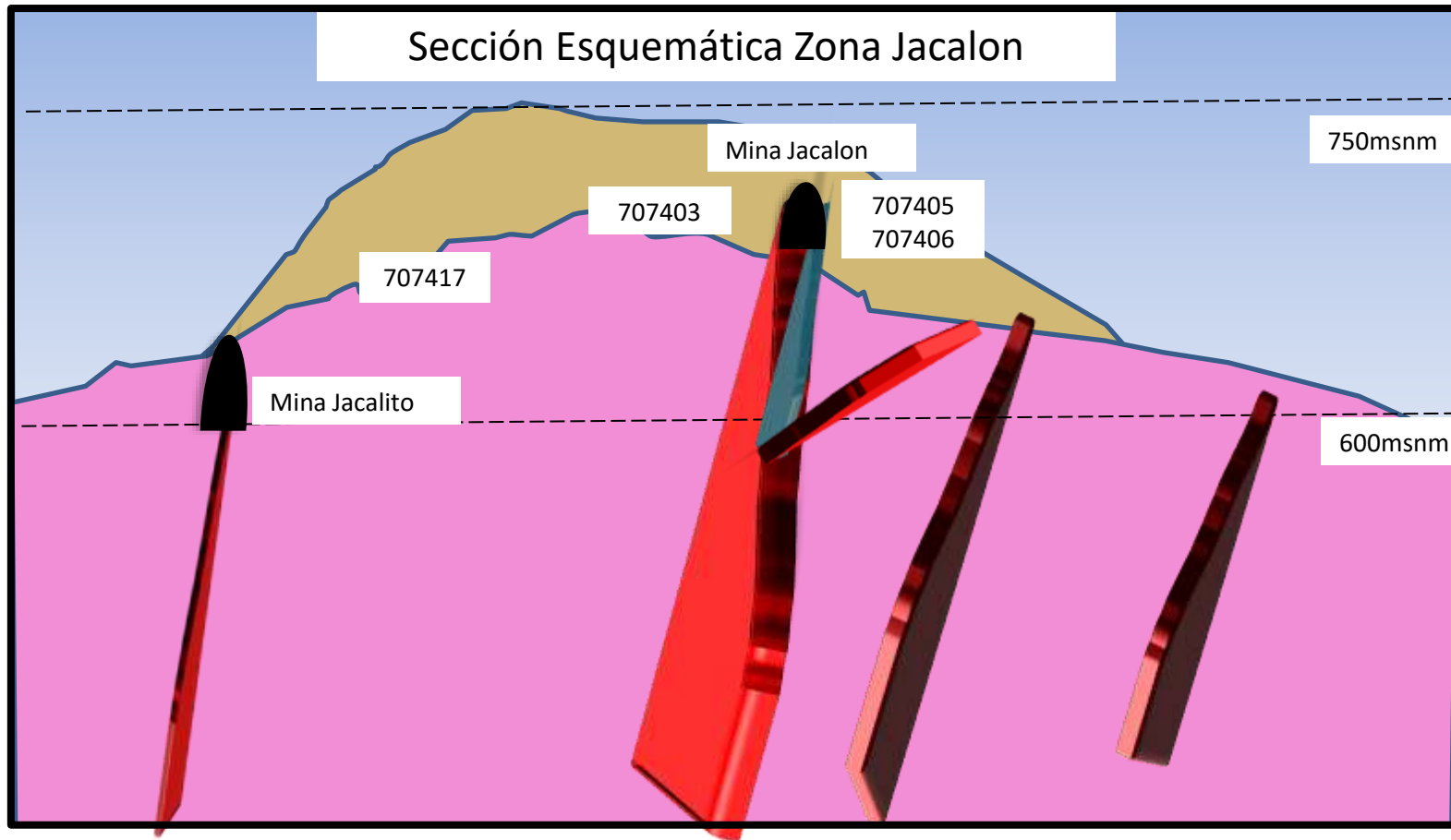
Silicified breccia grading 51.5 g/t Au from main Calton target. Diamante 2 SW location map on regional geology, graduated Au-Ag symbols.



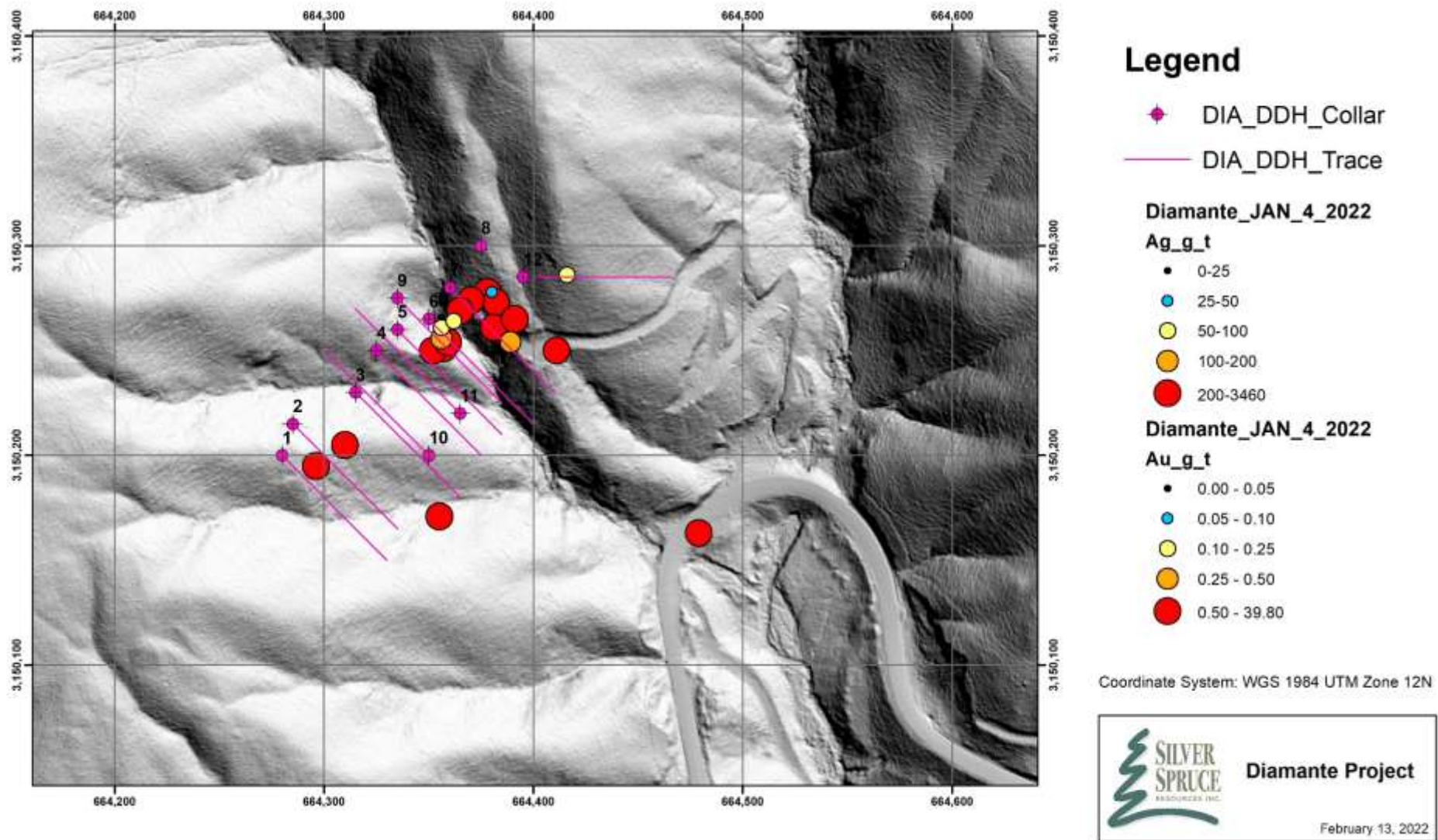
Diamante 2 - Calton Artisanal Trenching



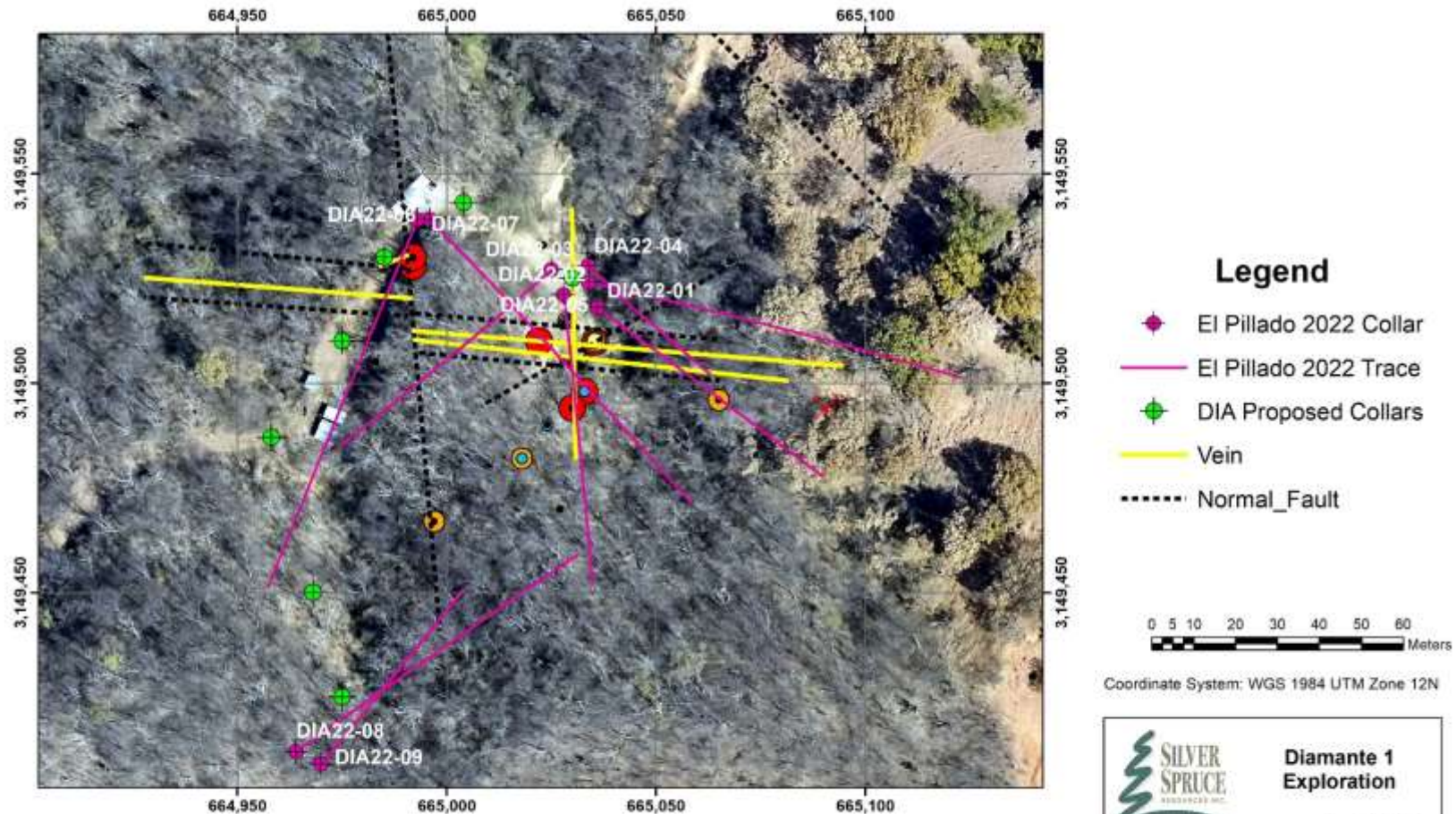
Diamante 2 - Phase 1 Drill Exploration



Diamante 1 - Phase 1 Drill Exploration



Diamante 1 - 2022 El Pillado Drilling

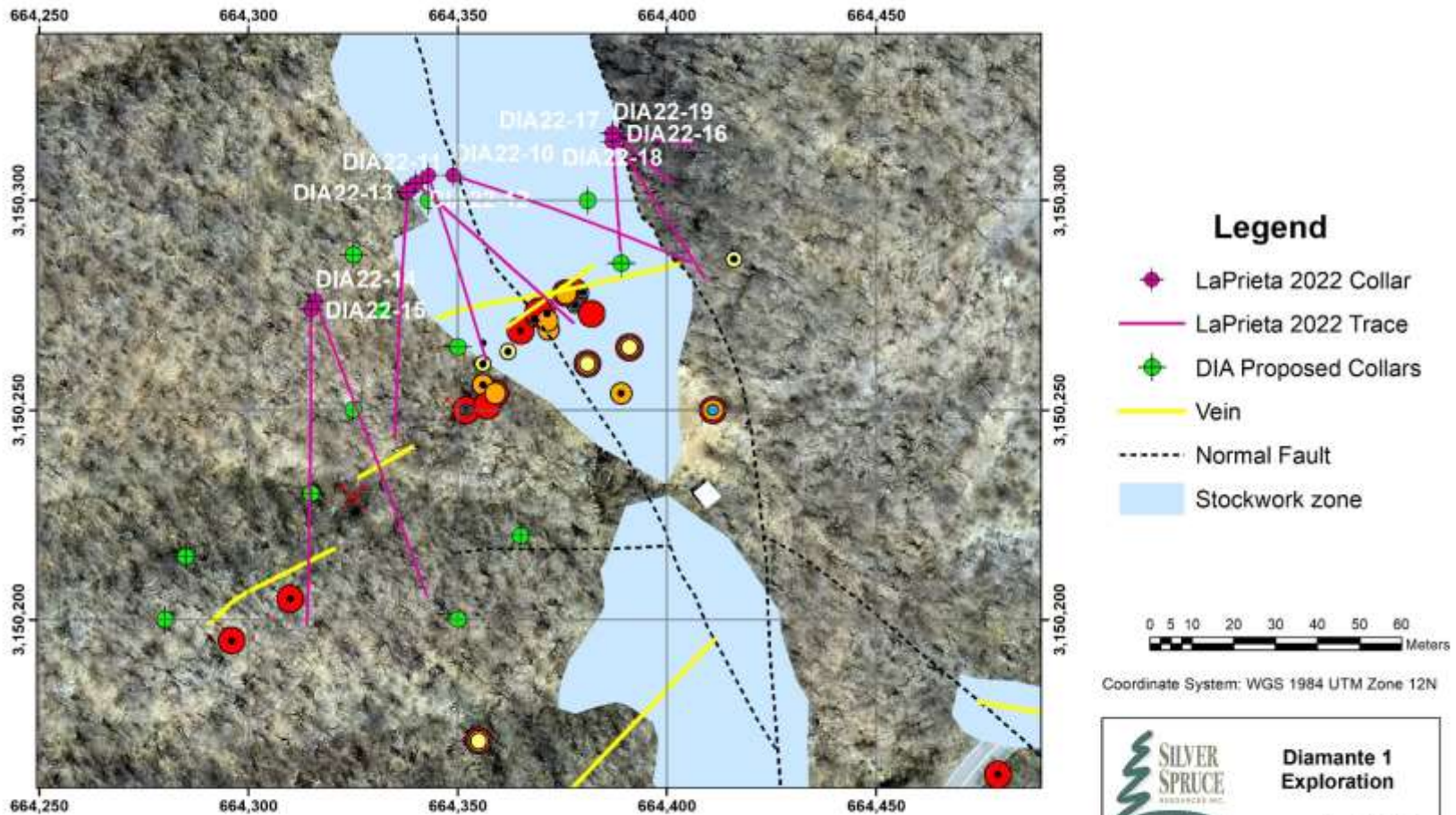


Diamante 1 - El Pillado Drilling Results

| Hole ID | From | To | Length | Au (g/t) | Ag (g/t) | Zn (%) | Pb (%) | Ag Eq (g/t) | Au eq (g/t) |
|----------|-------|-------|--------|----------|----------|--------|--------|-------------|-------------|
| DIA22-01 | 27.0 | 37.5 | 10.5 | 0.04 | 9.87 | 0.37 | 0.12 | 35.46 | 0.40 |
| DIA22-01 | 54.0 | 55.5 | 1.5 | 0.06 | 7.00 | 1.06 | 0.19 | 69.25 | 0.78 |
| DIA22-01 | 72.0 | 73.5 | 1.5 | 0.03 | 13.50 | 1.52 | 0.66 | 110.35 | 1.24 |
| DIA22-02 | 45.0 | 49.5 | 4.5 | 0.05 | 5.90 | 1.33 | 0.02 | 75.41 | 0.85 |
| DIA22-02 | 22.5 | 24.0 | 1.5 | 0.04 | 4.20 | 0.48 | 0.03 | 31.85 | 0.36 |
| DIA22-02 | 43.5 | 54.0 | 10.5 | 0.04 | 6.27 | 0.78 | 0.12 | 51.71 | 0.58 |
| includes | 48.0 | 49.5 | 1.5 | 0.09 | 13.20 | 3.89 | 0.04 | 210.87 | 2.37 |
| DIA22-02 | 64.5 | 66.0 | 1.5 | 0.03 | 3.60 | 0.83 | 0.04 | 47.84 | 0.54 |
| DIA22-02 | 84.0 | 85.5 | 1.5 | 0.13 | 15.20 | 0.66 | 0.98 | 88.13 | 0.99 |
| DIA22-02 | 84.0 | 85.5 | 1.5 | 0.13 | 15.20 | 0.66 | 0.98 | 88.13 | 0.99 |
| DIA22-03 | 16.5 | 18.0 | 1.5 | 0.20 | 6.60 | 0.06 | 0.01 | 27.13 | 0.30 |
| DIA22-04 | 0.0 | 1.5 | 1.5 | 0.03 | 6.00 | 0.75 | 0.14 | 49.54 | 0.56 |
| DIA22-05 | 24.0 | 36.0 | 12.0 | 0.18 | 145.49 | 1.35 | 1.01 | 257.63 | 2.89 |
| includes | 24.0 | 30.0 | 6.0 | 0.26 | 184.50 | 1.08 | 0.61 | 278.51 | 3.13 |
| includes | 33.0 | 36.0 | 3.0 | 0.16 | 209.10 | 3.15 | 2.79 | 461.65 | 5.19 |
| includes | 33.0 | 34.5 | 1.5 | 0.31 | 397.00 | 5.87 | 5.31 | 871.62 | 9.79 |
| DIA22-05 | 43.5 | 60.0 | 16.5 | 0.21 | 41.75 | 2.14 | 0.68 | 185.13 | 2.08 |
| includes | 45.0 | 51.0 | 6.0 | 0.15 | 87.64 | 4.58 | 1.45 | 367.54 | 4.13 |
| includes | 46.5 | 48.0 | 1.5 | 0.21 | 257.00 | 7.84 | 5.23 | 815.53 | 9.16 |
| DIA22-05 | 78.0 | 81.0 | 3.0 | 0.17 | 26.60 | 4.19 | 1.05 | 276.87 | 3.11 |
| includes | 78.0 | 79.5 | 1.5 | 0.27 | 35.80 | 6.91 | 1.60 | 443.58 | 4.98 |
| DIA22-05 | 99.0 | 100.5 | 1.5 | 0.25 | 1.90 | 0.08 | 0.04 | 29.35 | 0.33 |
| DIA22-05 | 118.5 | 120.0 | 1.5 | 0.04 | 12.20 | 0.43 | 0.34 | 46.96 | 0.53 |
| DIA22-06 | 6.0 | 10.5 | 4.5 | 0.06 | 28.73 | 0.24 | 0.52 | 61.39 | 0.69 |
| includes | 6.0 | 7.5 | 1.5 | 0.07 | 60.40 | 0.20 | 1.21 | 113.45 | 1.27 |
| DIA22-08 | 130.5 | 132.0 | 1.5 | 0.93 | 2.20 | 0.03 | 0.02 | 87.20 | 0.98 |
| DIA22-09 | 117.0 | 120.0 | 3.0 | 0.11 | 19.85 | 0.50 | 0.09 | 56.65 | 0.64 |



Diamante 1 - 2022 La Prieta Drilling



Diamante 1 - La Prieta Drilling Results

| Hole ID | From | To | Length | Au (g/t) | Ag (g/t) | Zn (%) | Pb (%) | Ag Eq (g/t) | Au eq (g/t) |
|----------|------|------|--------|----------|----------|--------|--------|-------------|-------------|
| DIA22-10 | 48.0 | 54.0 | 6.0 | 0.46 | 56.88 | 1.06 | 0.53 | 165.47 | 1.86 |
| includes | 49.5 | 51.0 | 1.5 | 0.87 | 125.00 | 2.82 | 1.45 | 383.75 | 4.31 |
| DIA22-11 | 54.0 | 55.5 | 1.5 | 0.15 | 4.50 | 0.16 | 0.09 | 28.25 | 0.32 |
| DIA22-12 | 51.0 | 52.5 | 1.5 | 0.18 | 4.80 | 0.22 | 0.08 | 33.71 | 0.38 |
| DIA22-13 | 49.5 | 51.0 | 1.5 | 0.31 | 53.70 | 1.49 | 0.39 | 165.09 | 1.85 |
| DIA22-14 | 52.5 | 55.5 | 3.0 | 0.59 | 16.50 | 0.46 | 0.23 | 98.14 | 1.10 |
| DIA22-15 | 36.0 | 37.5 | 1.5 | 0.54 | 0.25 | 0.01 | 0.00 | 48.70 | 0.55 |
| DIA22-16 | 1.5 | 10.5 | 9.0 | 2.48 | 56.70 | 0.28 | 0.71 | 312.84 | 3.51 |
| includes | 1.5 | 6.0 | 4.5 | 3.87 | 75.43 | 0.08 | 0.97 | 453.26 | 5.09 |
| DIA22-16 | 18.0 | 19.5 | 1.5 | 0.83 | 18.80 | 0.68 | 0.38 | 136.90 | 1.54 |
| DIA22-16 | 36.0 | 46.5 | 10.5 | 0.63 | 38.49 | 1.61 | 0.64 | 192.52 | 2.16 |
| includes | 37.5 | 39.0 | 1.5 | 1.36 | 139.00 | 8.74 | 2.88 | 772.12 | 8.67 |
| DIA22-17 | 30.0 | 43.5 | 13.5 | 0.56 | 38.48 | 1.76 | 0.76 | 196.95 | 2.21 |
| includes | 30.0 | 34.5 | 4.5 | 0.94 | 103.17 | 4.96 | 2.19 | 494.61 | 5.56 |
| DIA22-17 | 54.0 | 57.0 | 3.0 | 0.45 | 1.35 | 0.04 | 0.00 | 43.14 | 0.48 |
| DIA22-17 | 72.0 | 75.0 | 3.0 | 0.26 | 18.65 | 0.15 | 0.07 | 51.50 | 0.58 |
| DIA22-18 | 33.0 | 42.0 | 9.0 | 0.55 | 15.28 | 0.38 | 0.16 | 87.76 | 0.99 |
| includes | 37.5 | 40.5 | 3.0 | 1.07 | 38.80 | 0.63 | 0.35 | 175.81 | 1.98 |
| DIA22-18 | 48.0 | 51.0 | 3.0 | 0.48 | 11.35 | 0.08 | 0.03 | 59.14 | 0.66 |
| DIA22-19 | 10.5 | 13.5 | 3.0 | 1.36 | 86.80 | 1.69 | 0.91 | 317.91 | 3.57 |
| includes | 12.0 | 13.5 | 1.5 | 2.11 | 139.00 | 2.79 | 1.24 | 500.06 | 5.62 |
| DIA22-19 | 39.0 | 45.0 | 6.0 | 0.64 | 11.20 | 0.31 | 0.21 | 89.84 | 1.01 |
| DIA22-19 | 48.0 | 49.5 | 1.5 | 0.32 | 7.60 | 0.24 | 0.16 | 52.76 | 0.59 |



Diamante - Exploration Summary

El Pillado

- ✓ Anomalous values of Pb, Zn, Ag and pathfinders including As, Cd, Cu, Hg and Sb, up to 7.5 metres
- ✓ Confirmed mine target, both shallow and at depth, and given the promising metal grades in DIA22-05 remains open to the east

La Prieta

- ✓ Confirmed mine target, in shallow intersections and at depth, particularly in DIA22-17
- ✓ Warrants further work programs for the polymetallic, intermediate sulphidation mineralization
- ✓ Other high priority targets at Calton, Aguaje, El Chon, Mezquite Raizudo and several others await ground-based activities

Drilling at El Pillado



Diamante - Exploration Plans

Phase 2 Program – Part 1

- ✓ Environmental permitting
- ✓ Boots on the ground
- ✓ Ground truthing and rock sampling, geological and structural mapping
- ✓ Verify and prioritize targets for drilling

Phase 2 Program – Part 2

- ✓ Focused drilling on key targets
- ✓ On-site analysis to assist dynamic planning
- ✓ Drill up to 4 holes, verify mineralization and move to next target

Drilling at El Pillado



“Seizing Opportunity and Creating Value”



EXPLORING in MEXICO *JACKIE*** Au-Ag Project**

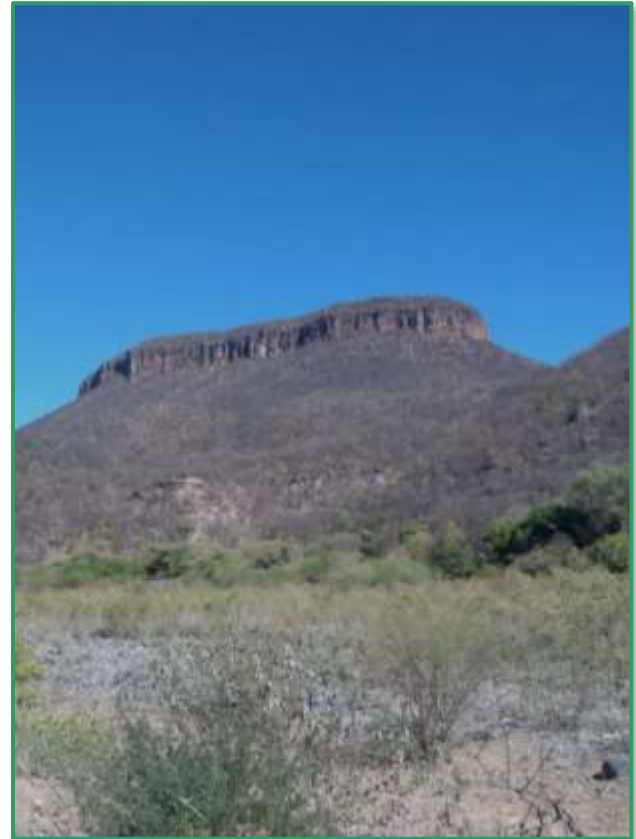
TSX Venture: SSE
US OTCQB: SSEBF
Frankfurt: S6Q

www.silverspruceresources.com

October 2024



Jackie Au-Ag Project, Sonora, Mexico



Jackie - The Property

- ✓ Located 52km SW of Mulatos and 60km SW of La India Mines in very productive region of the Sierra Madre Occidental gold-silver belt
- ✓ Road and trail-accessible concessions comprising 1,130 hectares located 170km SE of Hermosillo
- ✓ **Exploration Target is low grade, large tonnage, heap leachable deposit**
- ✓ **No record of historical exploration**
- ✓ West and adjacent to Minera Alamos' Santana/Nicho mine
- ✓ Option Agreement completed to earn 50% interest; joint venture documents signed
- ✓ **Phase 1 and 2 expenditures completed**
- ✓ **Final cash and share payment completed Nov 21**
- ✓ **Phase 1 trenching planned prior to drilling**
- ✓ **Updated SEMARNAT report and permit required**



Project Location

Sierra Madre Occidental - Sonora



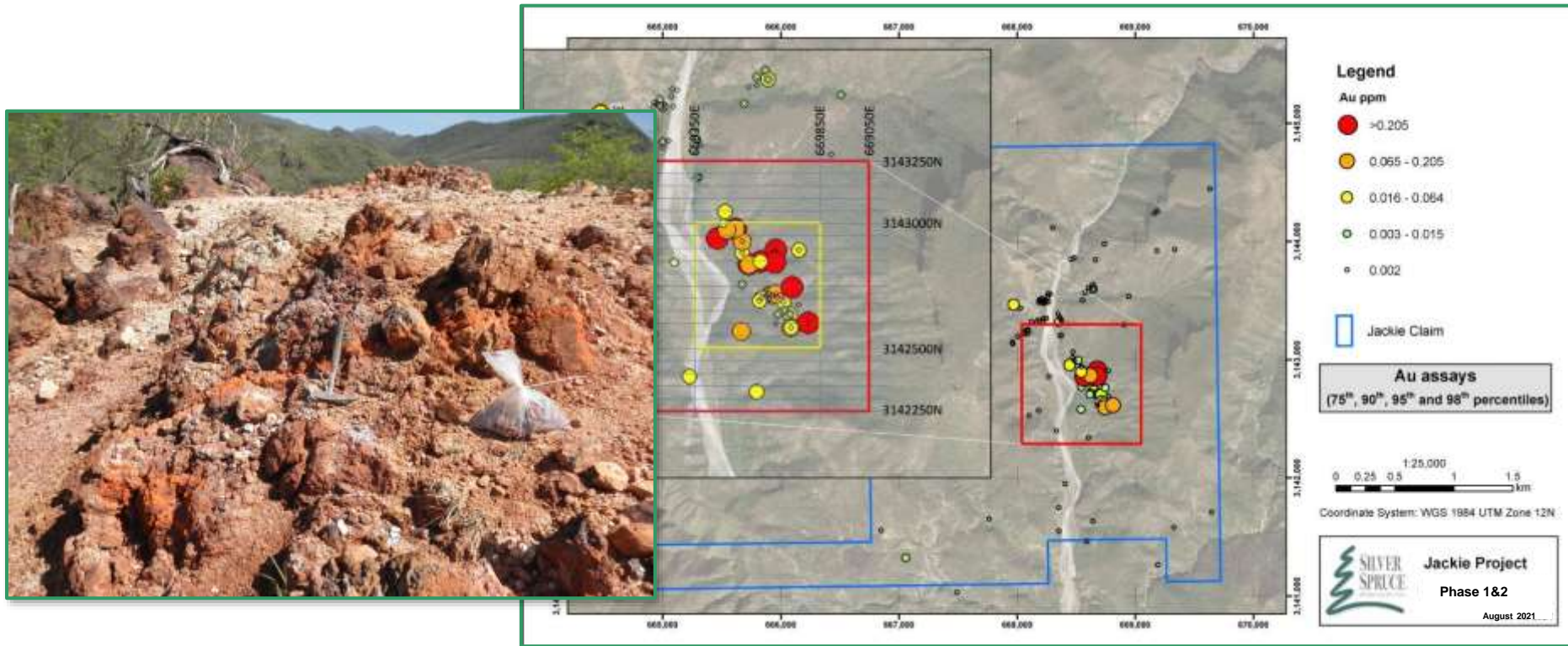
Jackie - Exploration and Plans

- ✓ Recent Au, multi-element and hyperspectral analysis of 310 rock samples in Phase 1 and 2 programs
- ✓ Phase 1 prospecting identifies new Au-Ag target **up to 9.56 g/t Au and 515 g/t Ag**
- ✓ Phase 2 mapping extends mineralization to 200m x 400m area with open NW trend, samples to **4.15 g/t Au and 100 g/t Ag**
- ✓ Regional hyperspectral ASTER and Landsat 8 OLI interpretation
- ✓ LiDAR survey completed to provide high resolution topography and imagery
- ✓ **Environmental (SEMARNAT) report completed, received trench and drill permits, updates pending for next programs**
- ✓ **Trenching planned to provide vectors for drilling**



Phase 1 sample pit 9.56 g/t Au, 515 g/t Ag
Intense zeolite, clay, jarosite 'argillic' alteration

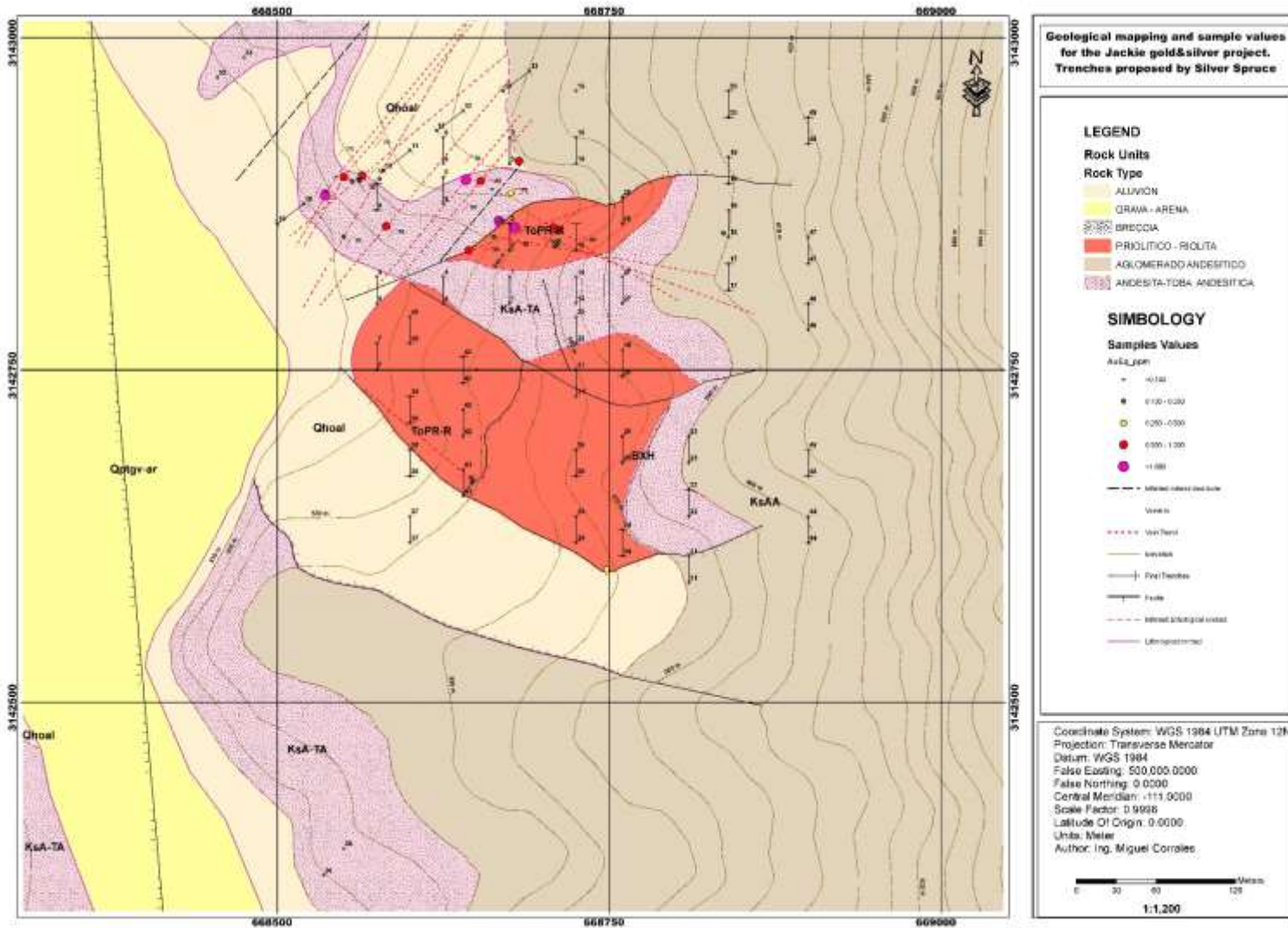
Jackie - Exploration Quote



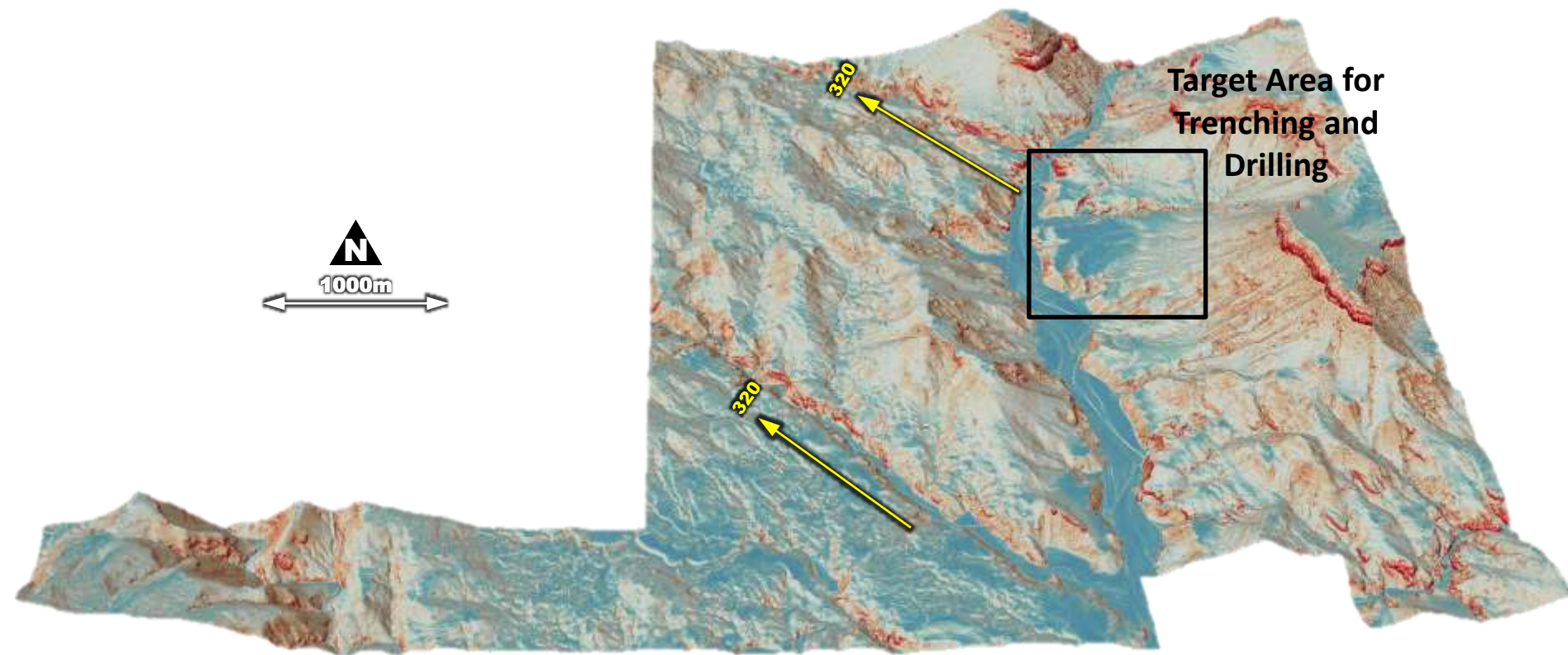
“We are excited about the potential for Jackie given the positive results and an original discovery with our early exploration campaigns. The intense silicate and oxide alteration with high-grade precious metal values ranging up to 9.65 g/t Au and 515 g/t Ag in Phase 1, and up to 4.15 g/t Au and 100 g/t Ag in separate Phase 2 samples, verified and extended the target area anomaly. A northwesterly trend running parallel to structural lineaments provides new untested targets for follow-up sampling, trenching and drilling.”



Jackie - Geological Mapping

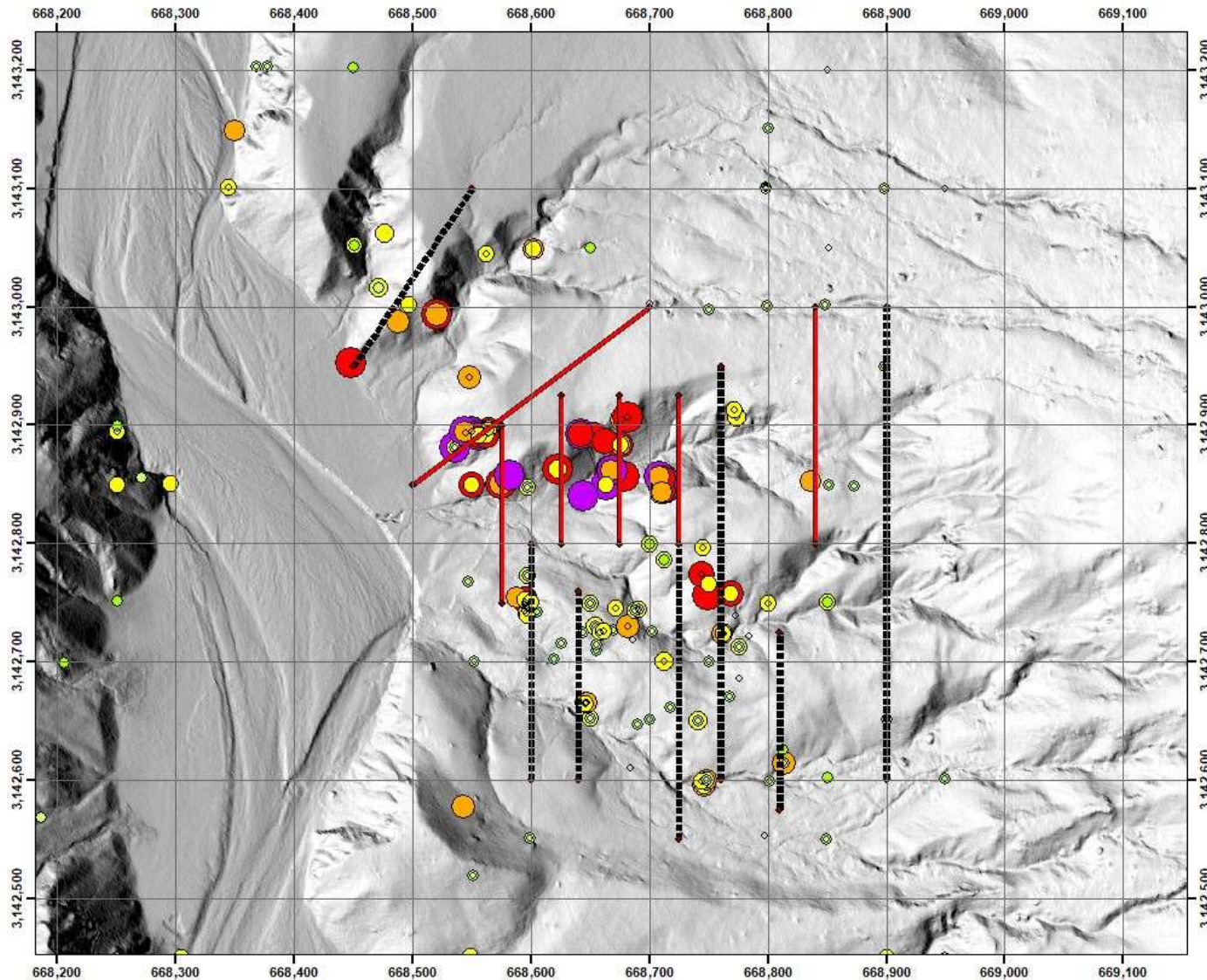


Jackie - Exploration and Plans

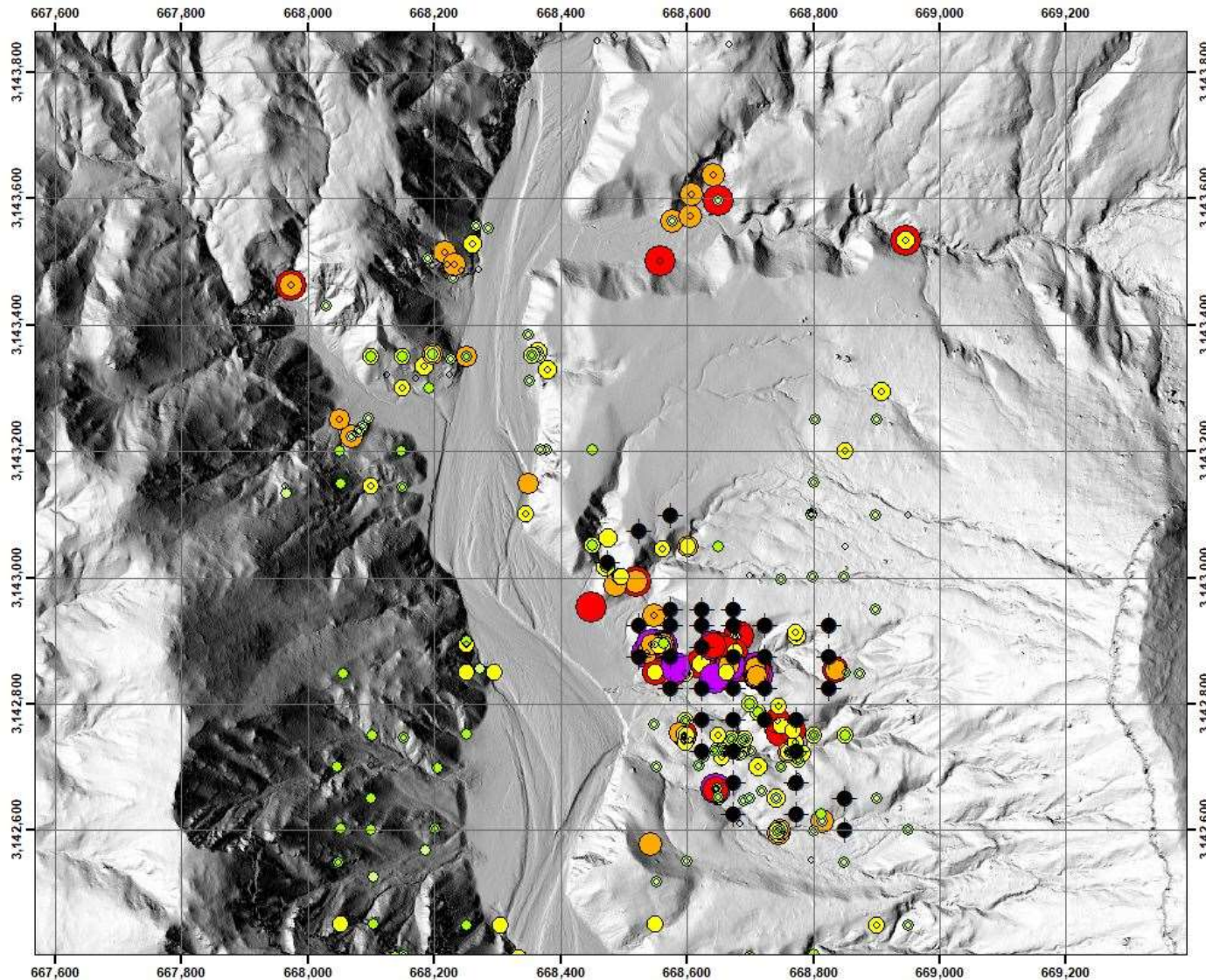


LiDAR enhanced digital elevation map with drill targets looking south across Jackie property

Jackie - Sampling, Proposed Phase 1, 2 Trenching



Jackie - Sampling, Proposed Drilling for Permit



Silver Spruce Resources Inc.

TSX Venture: SSE, USA OTCQB: SSEBF, Frankfurt: S6Q



Suite 440, 1600 Bedford Highway,
Bedford, Nova Scotia, B4A 1E8 Canada

Michael Kinley CEO Director 902-402-0388
Greg Davison PGeo VPX Director 250-521-0444

info@silverspruceresources.com
www.silverspruceresources.com

